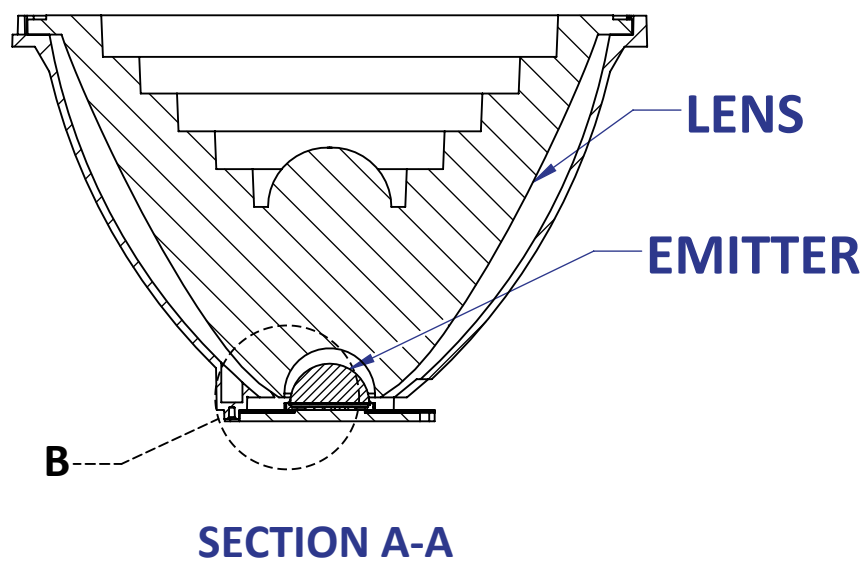
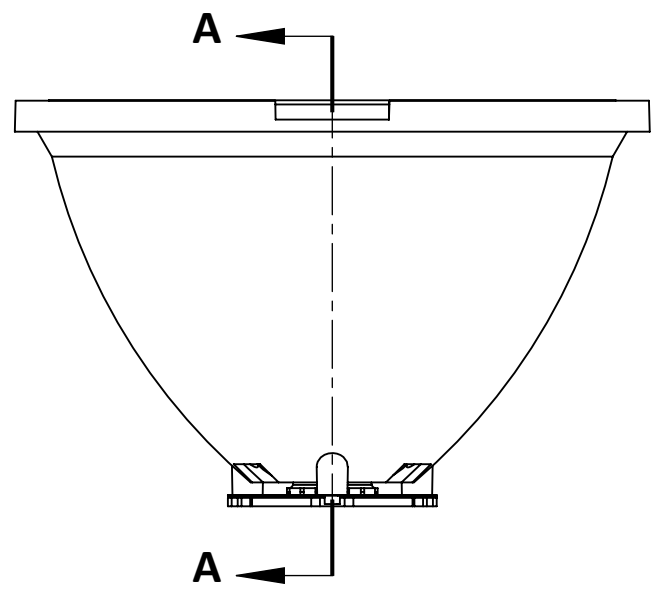
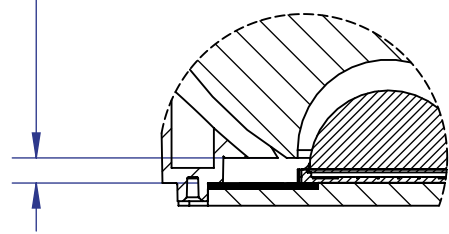


A

SHEET 1 OF 3

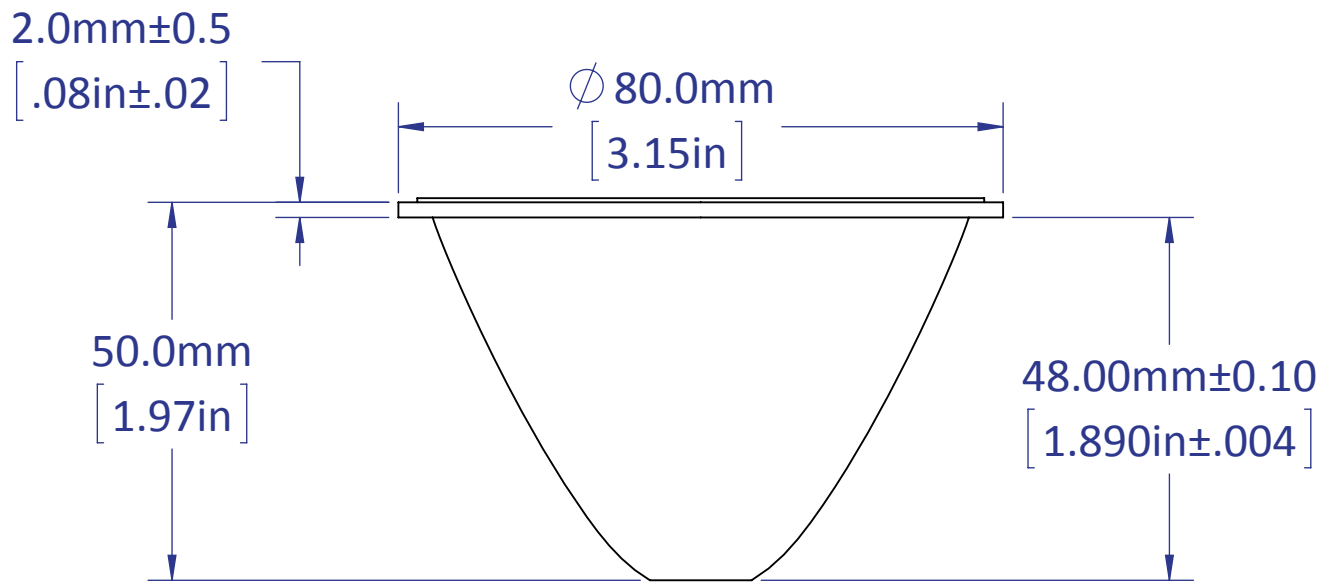


1.66mm±0.25
[.065in±.010]
(GAP BETWEEN BOTTOM
OF LENS AND BOTTOM
OF EMITTER SUBSTRATE)



DETAIL B
SCALE 2 : 1

LENS ONLY



- NOTES:
1. TOLERANCE BLOCK DOES NOT APPLY.
 2. ALL DIMENSIONS ARE TYPICAL VALUES.
 3. KEY OPTICAL SURFACES MAY BE DISTORTED.

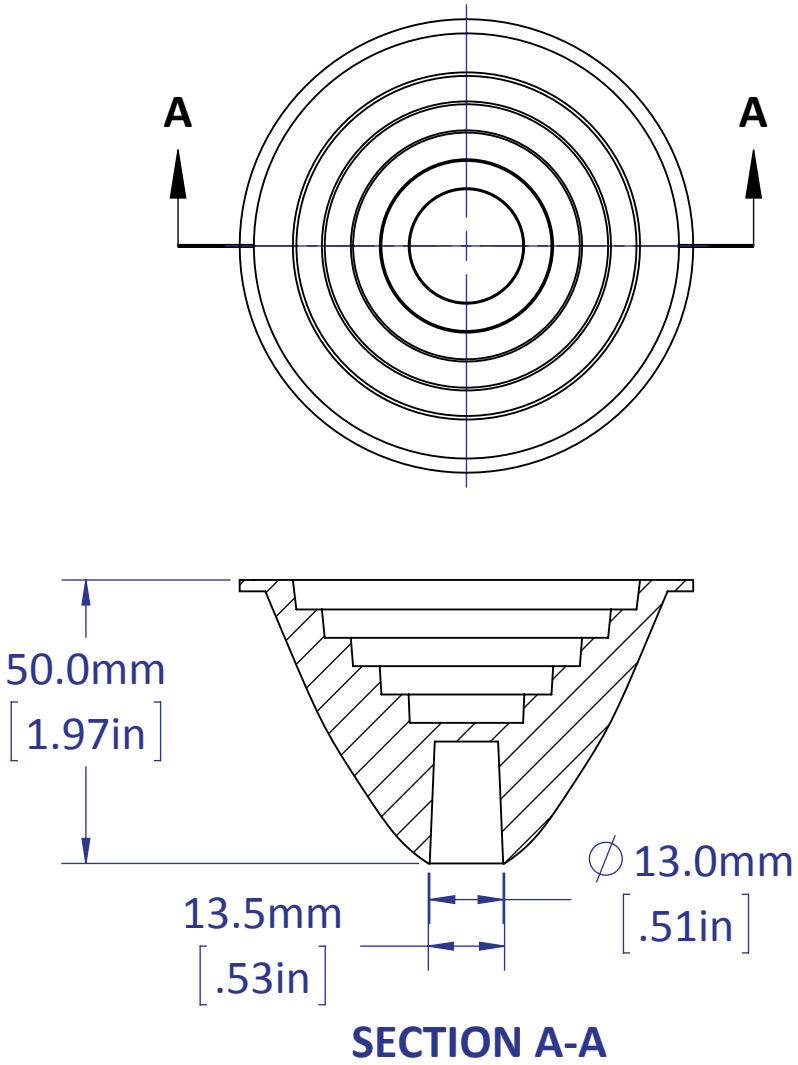
PROPRIETARY AND CONFIDENTIAL
THE INFORMATION CONTAINED IN THIS
DRAWING IS THE SOLE PROPERTY OF
LEDENGIN, INC. ANY
REPRODUCTION IN PART OR AS A WHOLE
WITHOUT THE WRITTEN PERMISSION OF
LEDENGIN, CORP. IS PROHIBITED.

UNLESS OTHERWISE SPECIFIED:		NAME	
DIMENSIONS ARE IN MILLIMETERS TOLERANCES: .X ± 0.10 .XX ± 0.05 .XXX ± 0.025 Angle ± 0.5		DRAWN	DAA
		CHECKED	
		ENG APPR.	
		MFG APPR.	
		Q.A.	
MATERIAL		N/A	
FINISH		N/A	
DO NOT SCALE DRAWING			
		LED Engin, Inc.	
		LZP ∅ 84mm LENS HOLDER AND LENSES (LENS/EMITTER: SOLID VIEWS)	
SIZE	PART NUMBER		REV
C	LZP-(84mm)-Lenses-P3		A
SCALE: 1:1		SHEET 2 OF 3	

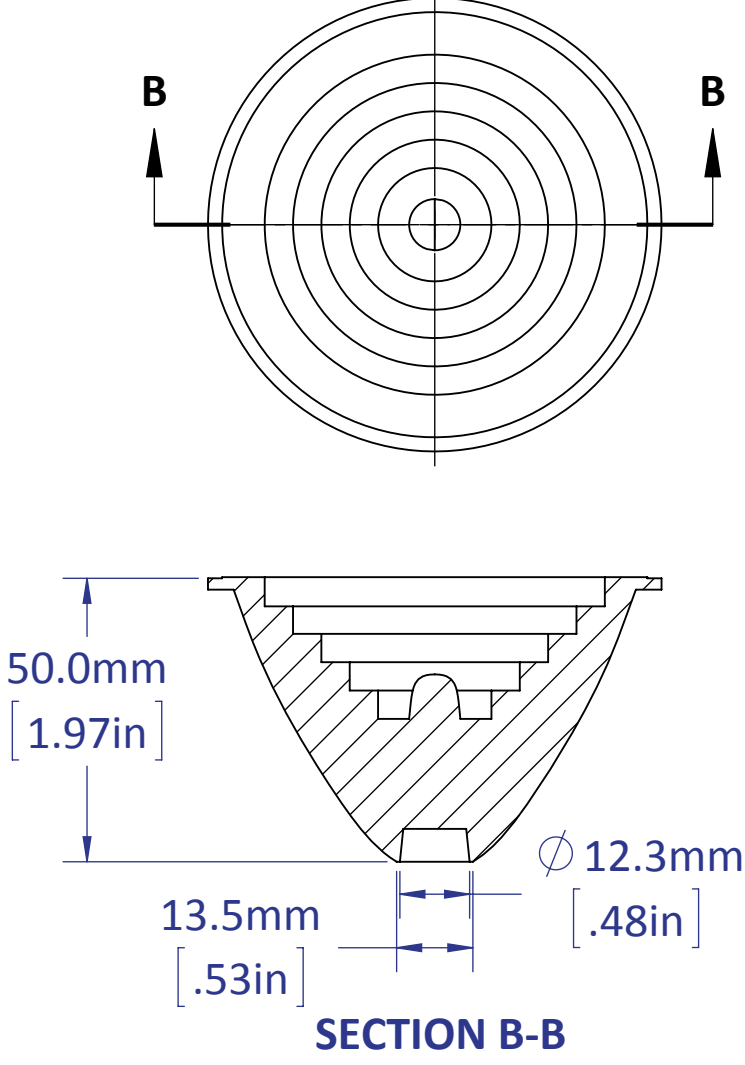
CROSS SECTIONAL VIEWS OF LENSES (FOR SHAPE COMPARISON ONLY)

FOR INTERNAL USE ONLY

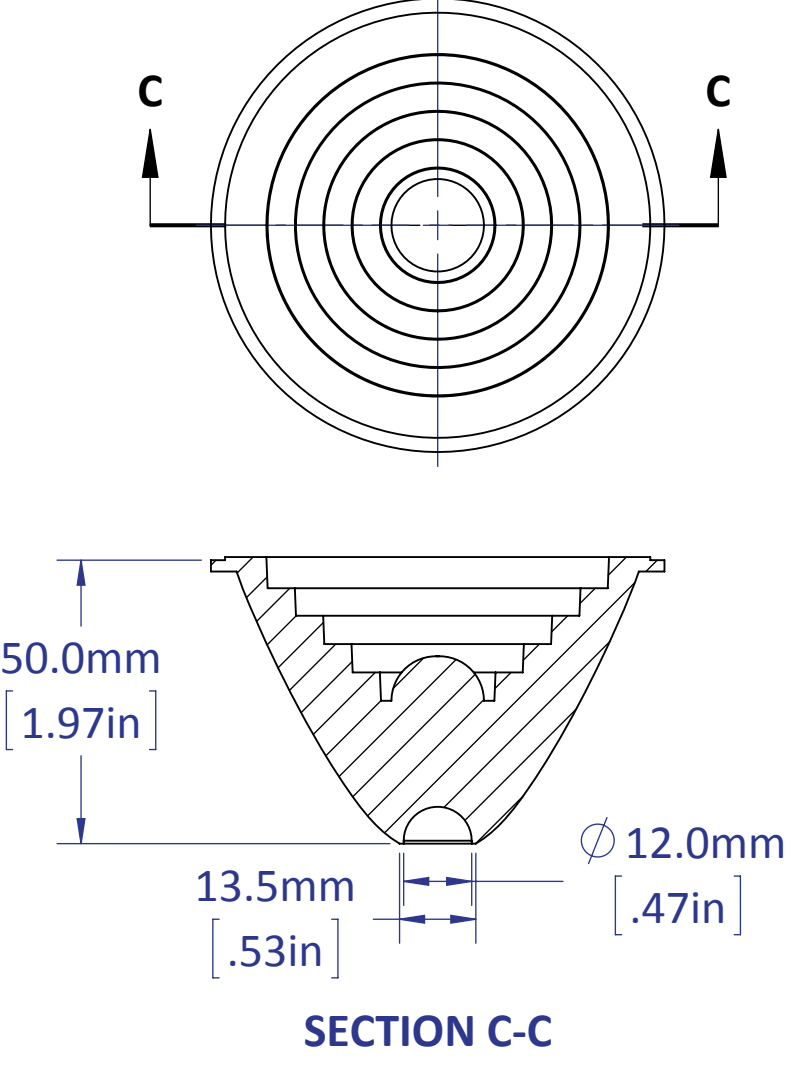
Lens: LLNF-4T11-O



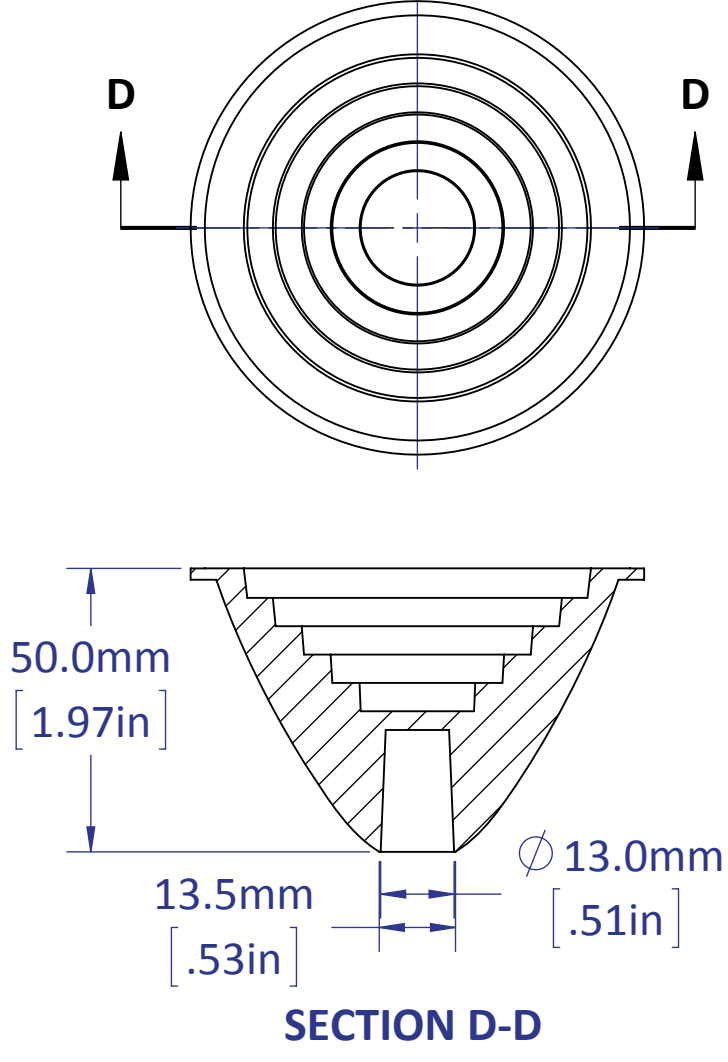
Lens: LLFL-6T11-O



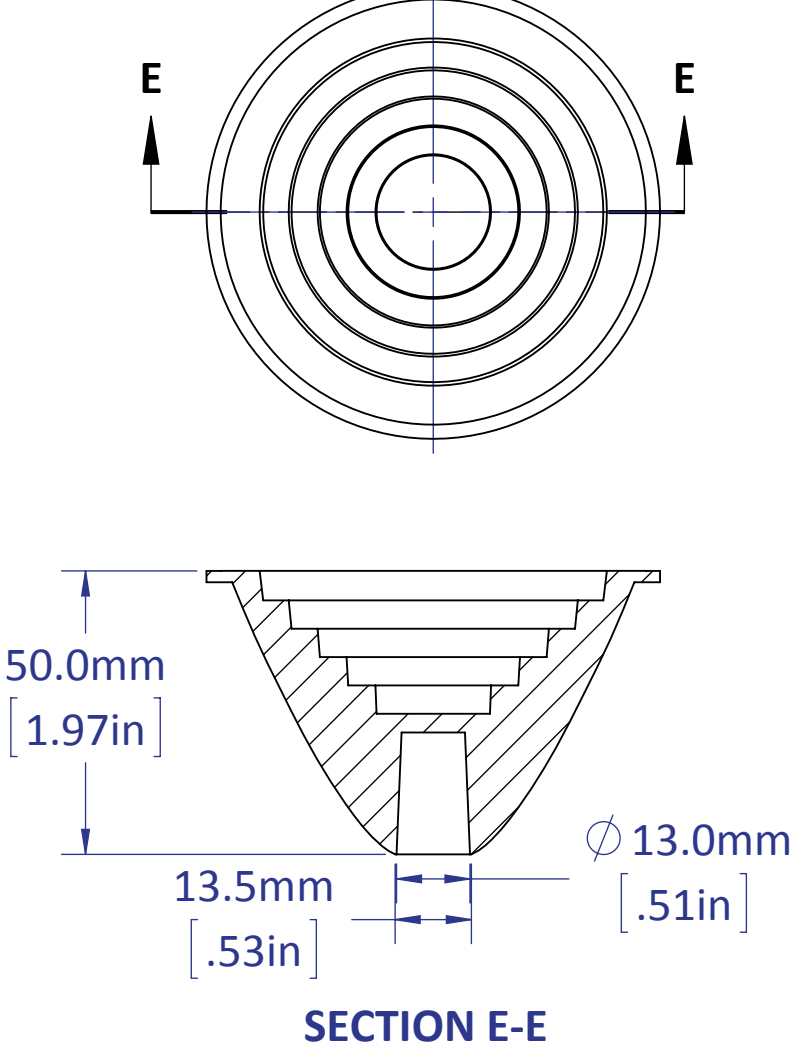
Lens: LLWF-6T11-O



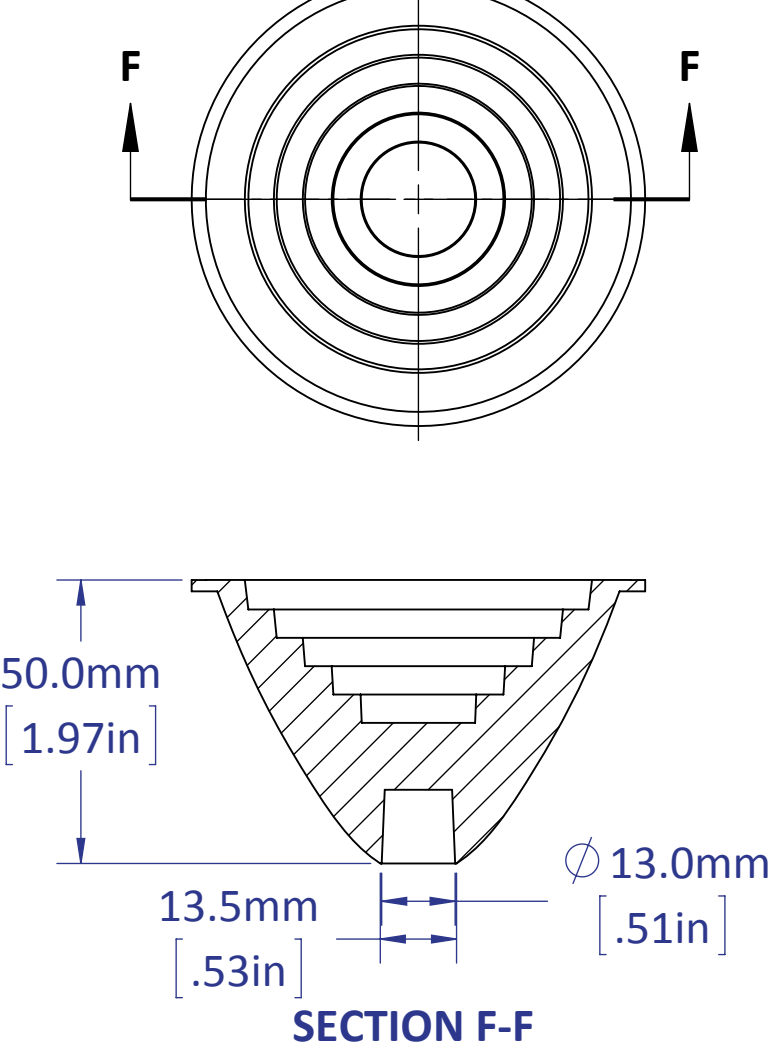
Lens: LLNS-3T11-O



Lens: LLSP-3T11-O



Lens: LLNF-1T11-O



- NOTES:
1. TOLERANCE BLOCK DOES NOT APPLY.
 2. ALL DIMENSIONS ARE TYPICAL VALUES.
 3. KEY OPTICAL SURFACES MAY BE DISTORTED.

PROPRIETARY AND CONFIDENTIAL
THE INFORMATION CONTAINED IN THIS DRAWING IS THE SOLE PROPERTY OF LEDENGIN, INC. ANY REPRODUCTION IN PART OR AS A WHOLE WITHOUT THE WRITTEN PERMISSION OF LEDENGIN, CORP. IS PROHIBITED.

UNLESS OTHERWISE SPECIFIED:	
DIMENSIONS ARE IN MILLIMETERS	
TOLERANCES:	
.X	± 0.10
.XX	± 0.05
.XXX	± 0.025
Angle	± 0.5
MATERIAL	N/A
FINISH	N/A
DO NOT SCALE DRAWING	

NAME	
DRAWN	DAA
CHECKED	
ENG APPR.	
MFG APPR.	
Q.A.	
COMMENTS:	

LED Engin, Inc.		
LZP Ø 84mm LENS		
HOLDER AND LENSES		
(LENS X-SECTION: SOLID VIEWS)		
SIZE	PART NUMBER	REV
C	LZP-(84mm)-Lenses-P3	A
SCALE: 3:4		SHEET 3 OF 3