

D

C

B

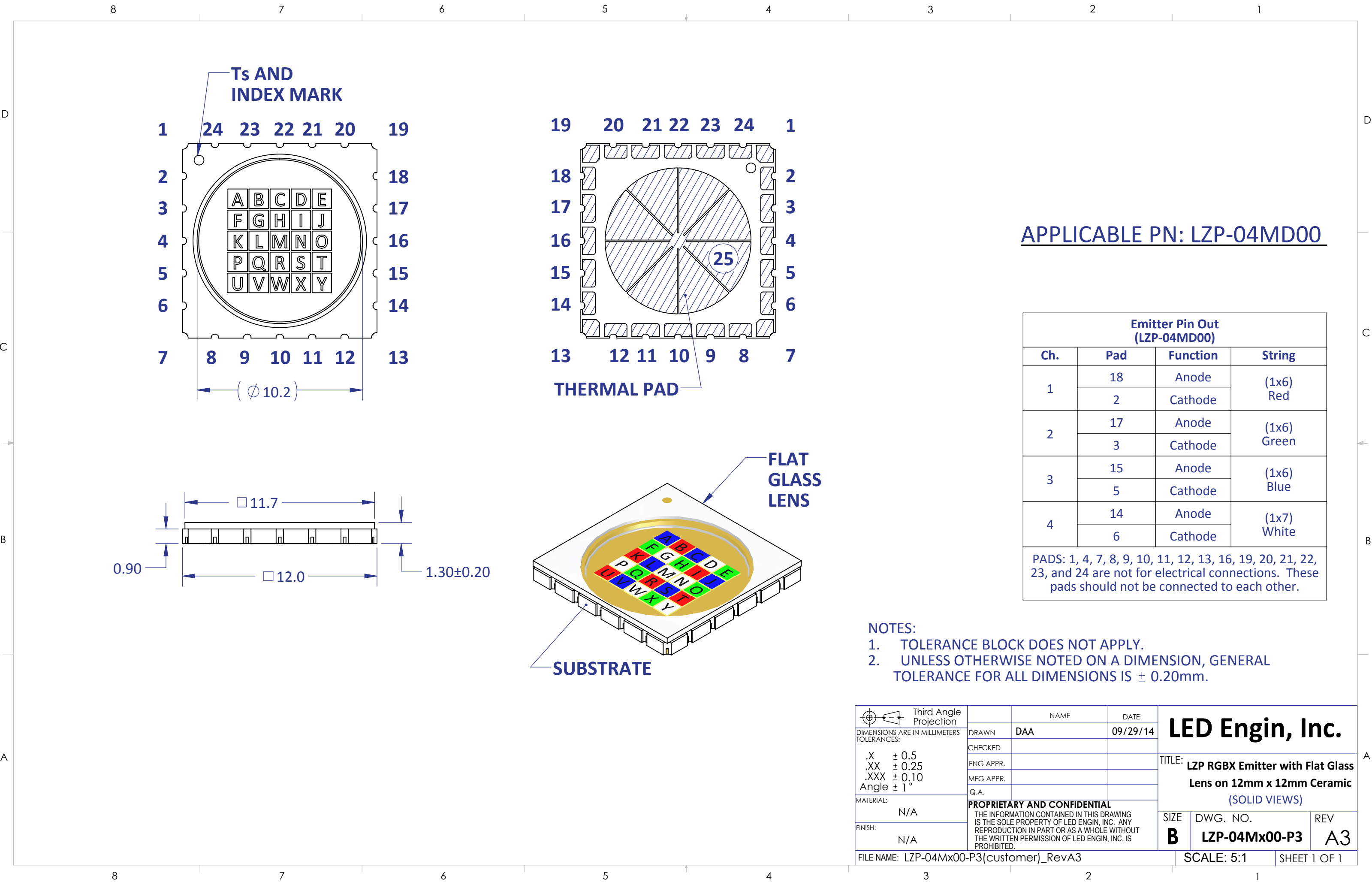
A

D

C

B

A



APPLICABLE PN: LZP-04MD00

Emitter Pin Out (LZP-04MD00)			
Ch.	Pad	Function	String
1	18	Anode	(1x6) Red
	2	Cathode	
2	17	Anode	(1x6) Green
	3	Cathode	
3	15	Anode	(1x6) Blue
	5	Cathode	
4	14	Anode	(1x7) White
	6	Cathode	
PADS: 1, 4, 7, 8, 9, 10, 11, 12, 13, 16, 19, 20, 21, 22, 23, and 24 are not for electrical connections. These pads should not be connected to each other.			

- NOTES:
- TOLERANCE BLOCK DOES NOT APPLY.
  - UNLESS OTHERWISE NOTED ON A DIMENSION, GENERAL TOLERANCE FOR ALL DIMENSIONS IS  $\pm 0.20\text{mm}$ .

<div><div><div></div><div>Third Angle Projection</div></div><div>DIMENSIONS ARE IN MILLIMETERS</div><div>TOLERANCES:</div><div>.X <math>\pm 0.5</math></div><div>.XX <math>\pm 0.25</math></div><div>.XXX <math>\pm 0.10</math></div><div>Angle <math>\pm 1^\circ</math></div><div>MATERIAL: N/A</div><div>FINISH: N/A</div></div>	NAME		DATE	LED Engin, Inc.	
	DRAWN	DAA	09/29/14		
	CHECKED				
	ENG APPR.				
	MFG APPR.			TITLE: LZP RGBX Emitter with Flat Glass Lens on 12mm x 12mm Ceramic (SOLID VIEWS)	
	Q.A.				
MATERIAL: N/A				SIZE	DWG. NO.
FINISH: N/A				B	LZP-04Mx00-P3
FILE NAME: LZP-04Mx00-P3(customer)_RevA3				SCALE: 5:1	SHEET 1 OF 1