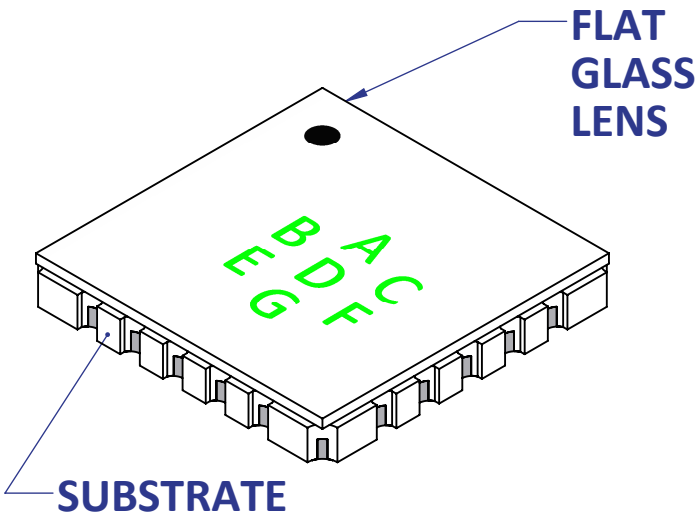
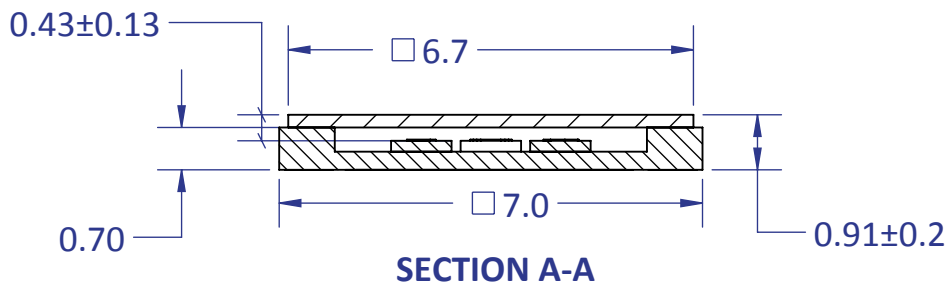
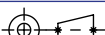


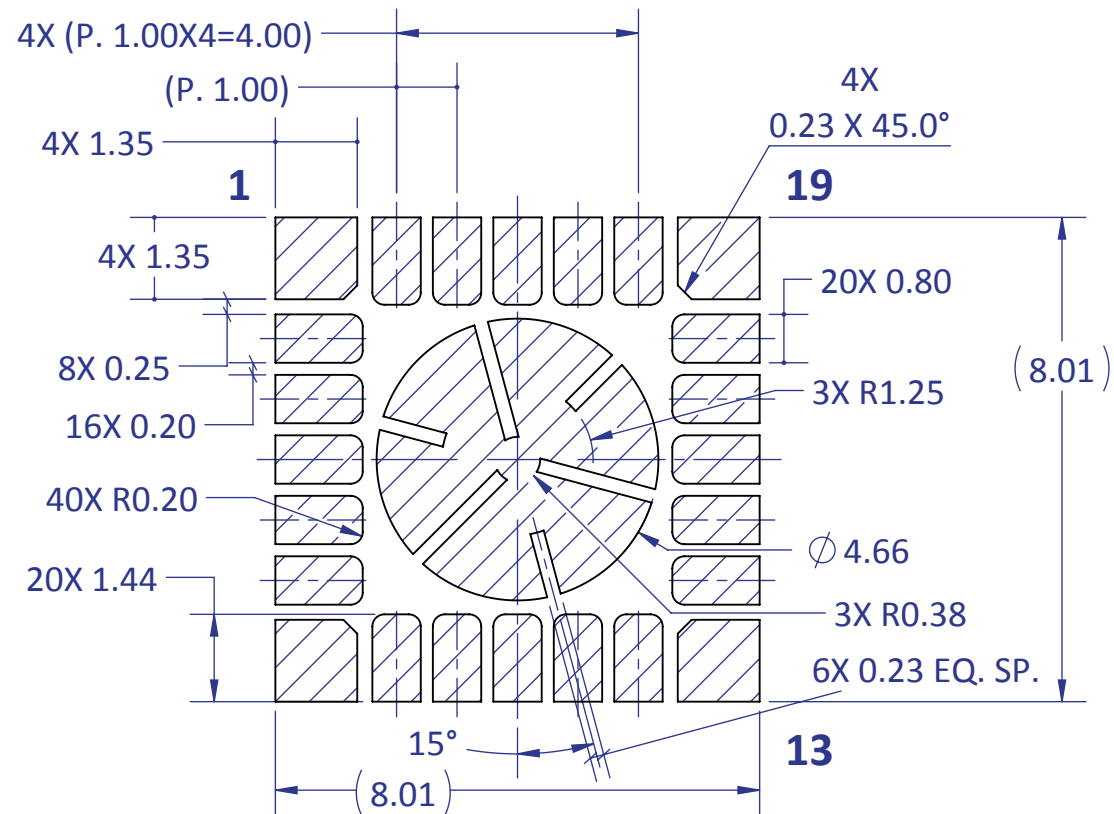
APPLICABLE PN: LZ7-04MU00



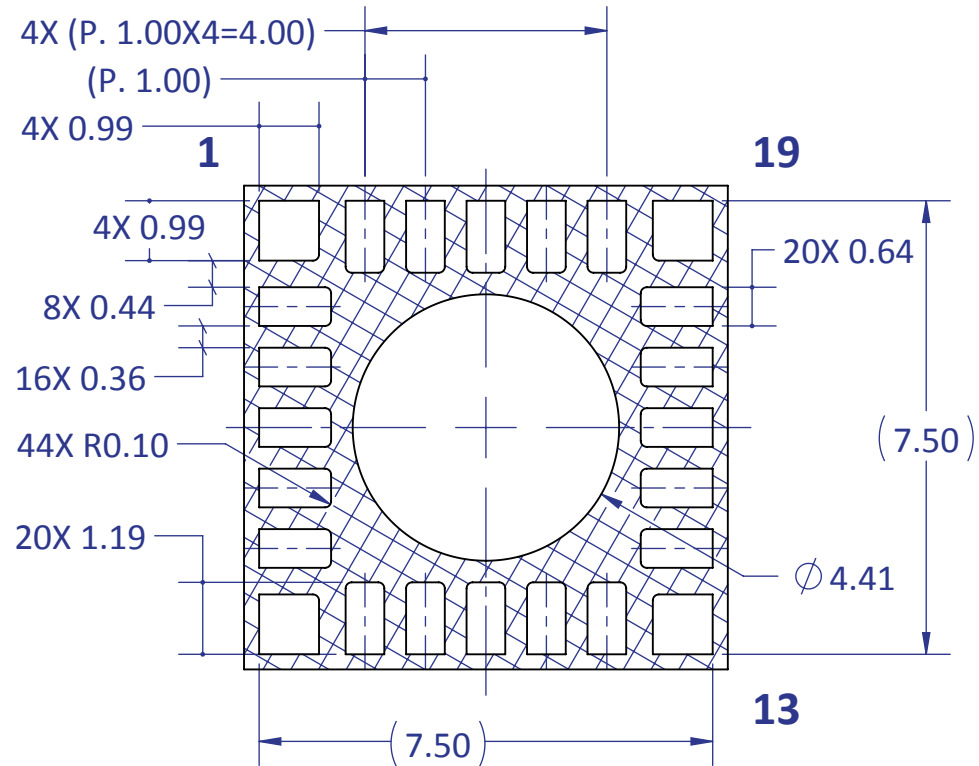
- NOTES:
1. TOLERANCE BLOCK DOES NOT APPLY.
 2. UNLESS OTHERWISE NOTED ON A DIMENSION, THE GENERAL TOLERANCE IS $\pm 0.20\text{mm}$.

<div></div> <div>Third Angle Projection</div> <div>DIMENSIONS ARE IN MILLIMETERS</div> <div>TOLERANCES:</div> <div><div>.X ± 0.5</div><div>.XX ± 0.25</div><div>.XXX ± 0.10</div><div>Angle ± 1°</div></div>		NAME	DATE	<div>LED Engin, Inc.</div> <div>TITLE:</div> <div>LZ7 RGBW-PC Amber-Cyan-Violet Emitter, with Flat Glass Lens (SOLID VIEW)</div>		
	DRAWN	DAA	03/23/16			
	CHECKED					
	ENG APPR.					
	MFG APPR.					
MATERIAL:		Q.A.		<div>PROPRIETARY AND CONFIDENTIAL</div> <div>THE INFORMATION CONTAINED IN THIS DRAWING IS THE SOLE PROPERTY OF LED ENGIN, INC. ANY REPRODUCTION IN PART OR AS A WHOLE WITHOUT THE WRITTEN PERMISSION OF LED ENGIN, INC. IS PROHIBITED.</div>		
N/A						
FINISH:				SIZE	DWG. NO.	REV
N/A				B	LZ7-04MU00-P3	A1
FILE NAME: LZ7-04MU00-P3(customer)_RevA1				SCALE: 8:1		SHEET 1 OF 3

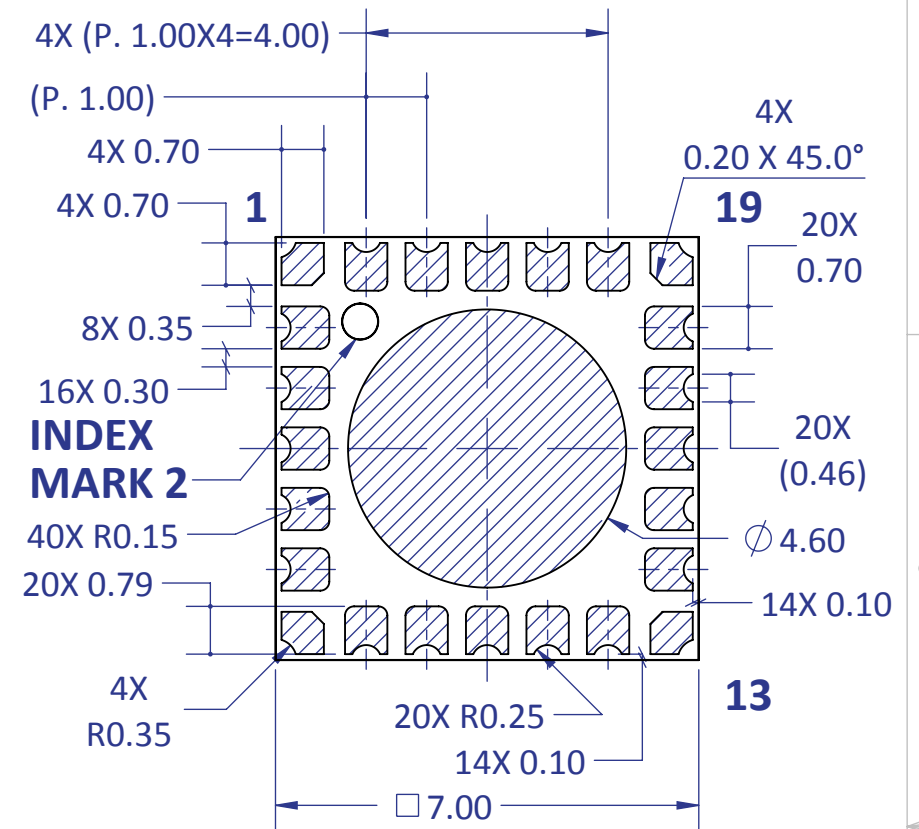
Recommended Exposed Minimum Land Pattern
(For: "Non-PEDESTAL" MCPCB Board Design)



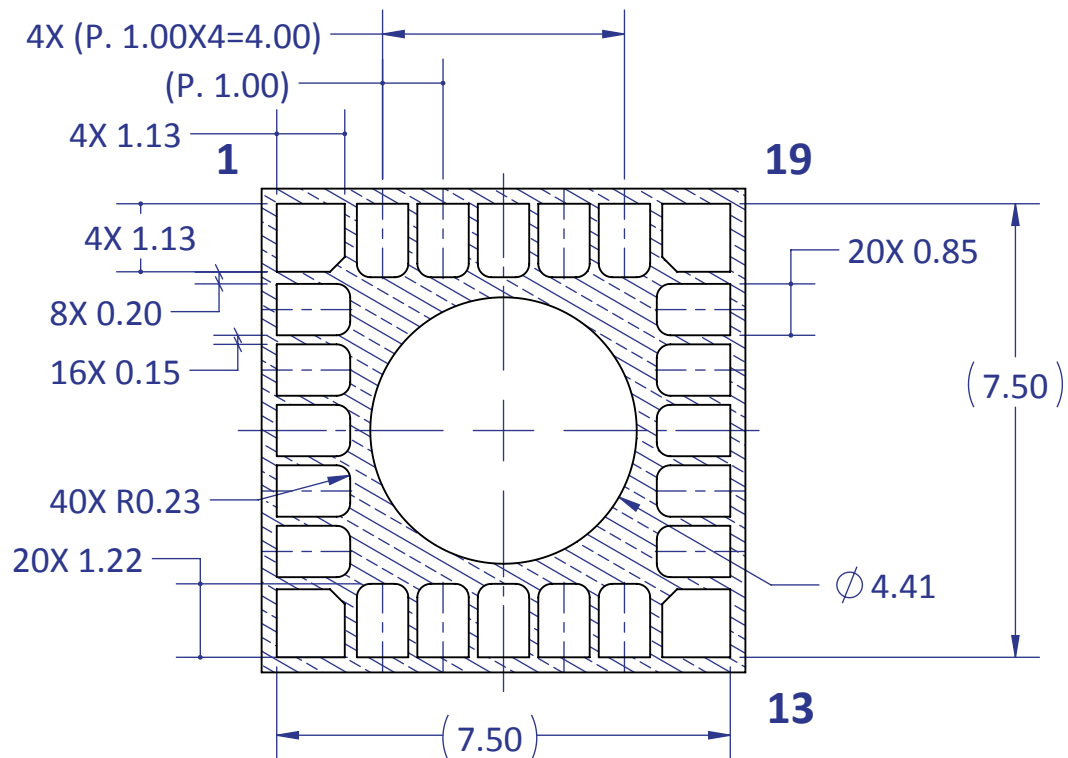
Recommended Apertures for 8mil Stencil
(based on Recommended Exposed Minimum Land Pattern)




Emitter's Footprint
(For Reference Only)



Recommended Solder Mask Openings
(based on Recommended Exposed Minimum Land Pattern)



<div></div> <div>Third Angle Projection</div> <div>DIMENSIONS ARE IN MILLIMETERS TOLERANCES:</div> <div><div>.X ± 0.5</div><div>.XX ± 0.25</div><div>.XXX ± 0.10</div><div>Angle ± 1°</div></div>	NAME		DATE	<div>LED Engin, Inc.</div>		
	DRAWN	DAA	03/23/16			
	CHECKED			<div>TITLE:</div> <div>LZ7 RGBW-PC Amber-Cyan-Violet Emitter, with Flat Glass Lens (For: "Non-PEDESTAL MCPCB)</div>		
	ENG APPR.					
	MFG APPR.					
Q.A.						
MATERIAL: <div>N/A</div>	<div>PROPRIETARY AND CONFIDENTIAL</div> <div>THE INFORMATION CONTAINED IN THIS DRAWING IS THE SOLE PROPERTY OF LED ENGIN, INC. ANY REPRODUCTION IN PART OR AS A WHOLE WITHOUT THE WRITTEN PERMISSION OF LED ENGIN, INC. IS PROHIBITED.</div>			SIZE	DWG. NO.	REV
FINISH: <div>N/A</div>				B	LZ7-04MU00-P3	A1
FILE NAME: LZ7-04MU00-P3(customer)_RevA1				SCALE: 8:1		SHEET 2 OF 3

Technical drawing of a circular pedestal pad. The drawing shows a central circular area labeled $\phi 4.22$ (PEDESTAL PAD). Surrounding this central area is a rectangular frame composed of multiple layers of material, indicated by hatching. The overall dimensions are 8.01 by 8.01 . Key dimensions and annotations include:

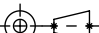
- Overall width: 8.01
- Overall height: 8.01
- Central circular area: $\phi 4.22$ (PEDESTAL PAD)
- Top-left corner: $4X$ (P. 1.00)
- Top-right corner: $4X$ $0.23 \times 45.0^\circ$
- Right side: $20X 0.80$
- Bottom-right corner: 13
- Bottom: (8.01)
- Left side: $4X 1.35$, $8X 0.25$, $16X 0.20$, $40X R0.20$, $20X 1.44$
- Top: 1
- Top-left corner: $4X 1.35$
- Top-right corner: 19

Technical drawing of a square plate with a central circular hole and a grid of smaller holes. The drawing includes dimensions for hole sizes, spacing, and overall plate dimensions.

Dimensions:

- Overall width: 4X (P. 1.00X4=4.00) (P. 1.00)
- Overall height: 4X (P. 1.00X4=4.00) (P. 1.00)
- Central hole diameter: $\varnothing 4.60$
- Grid of 16 smaller holes (4x4):
 - Hole diameter: 20X 0.70
 - Spacing between holes: 8X 0.35
 - Spacing from edge: 16X 0.30
- Central hole diameter: 7.00
- Grid of 16 smaller holes (4x4):
 - Hole diameter: 20X 0.70
 - Spacing between holes: 8X 0.35
 - Spacing from edge: 16X 0.30
- Central hole diameter: 7.00
- Grid of 16 smaller holes (4x4):
 - Hole diameter: 20X 0.70
 - Spacing between holes: 8X 0.35
 - Spacing from edge: 16X 0.30

Technical drawing of a square plate with a central circular hole and a rectangular notch. The drawing includes dimensions for the plate, hole, notch, and various fillets. Key dimensions include a square plate of 13x13, a central hole of diameter 4.67, and a rectangular notch of 7.50x7.50. Fillets are specified as 40X R0.23 for the notch corners and 20X R0.85 for the hole-to-plate transition. Other dimensions include 4X 1.13, 8X 0.20, 16X 0.15, 20X 1.22, and 4X 0.24 X 45.0 degrees.

 Third Angle Projection		NAME		DATE		<h1>LED Engin, Inc.</h1>	
DIMENSIONS ARE IN MILLIMETERS TOLERANCES: .X ± 0.5 .XX ± 0.25 .XXX ± 0.10 Angle ± 1°		DRAWN	DAA	03/23/16			
		CHECKED					
		ENG APPR.					
		MFG APPR.					
		Q.A.					
MATERIAL:		PROPRIETARY AND CONFIDENTIAL THE INFORMATION CONTAINED IN THIS DRAWING IS THE SOLE PROPERTY OF LED ENGIN, INC. ANY REPRODUCTION IN PART OR AS A WHOLE WITHOUT THE WRITTEN PERMISSION OF LED ENGIN, INC. IS PROHIBITED.				TITLE: LZ7 RGBW-PC Amber-Cyan-Violet Emitter, with Flat Glass Lens (For: "PEDESTAL" MCPCB)	
FINISH:		SIZE		DWG. NO.		REV	
N/A		B		LZ7-04MU00-P3		A1	
FILE NAME: LZ7-04MU00-P3(customer)_RevA1				SCALE: 8:1		SHEET 3 OF 3	