

D

C

B

A

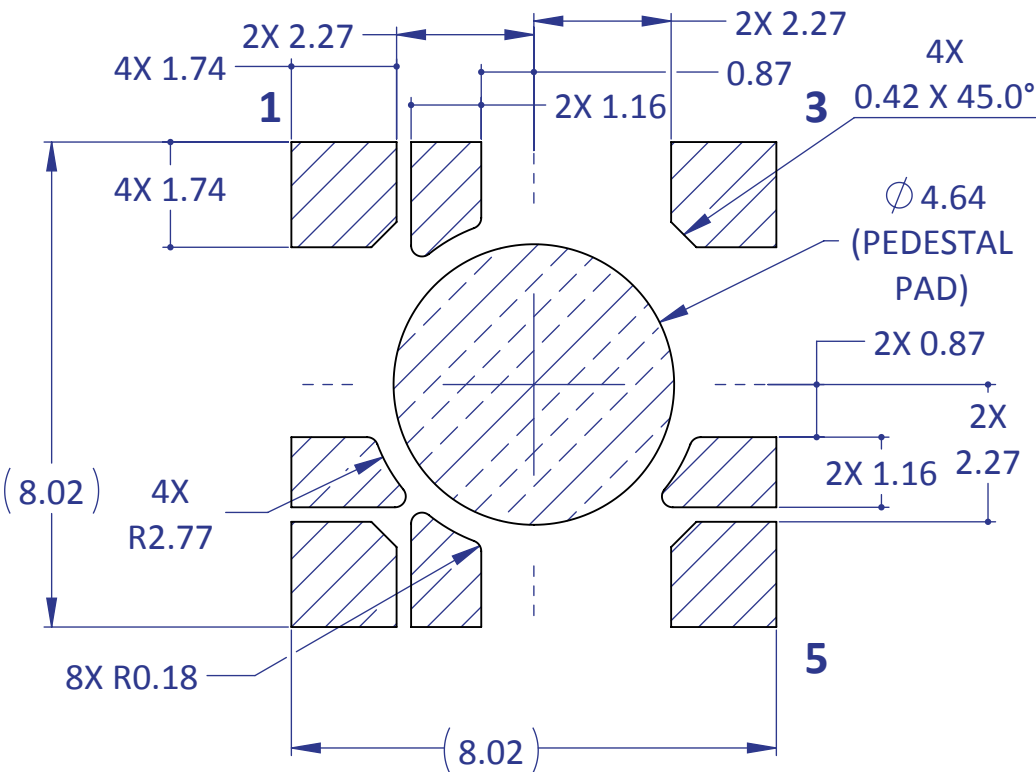
D

C

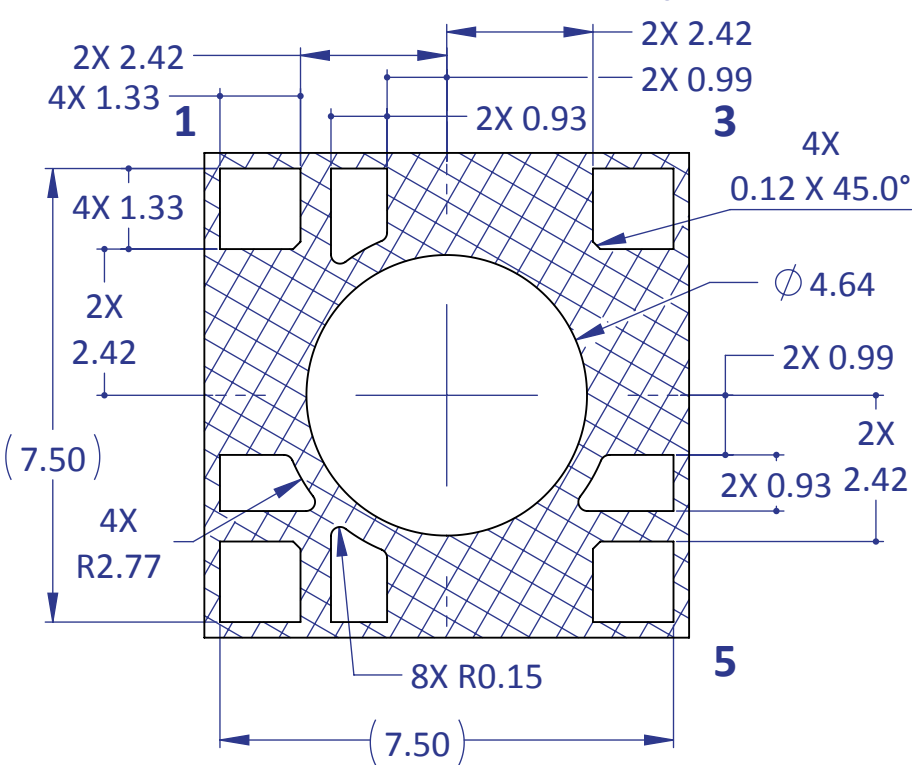
B

A

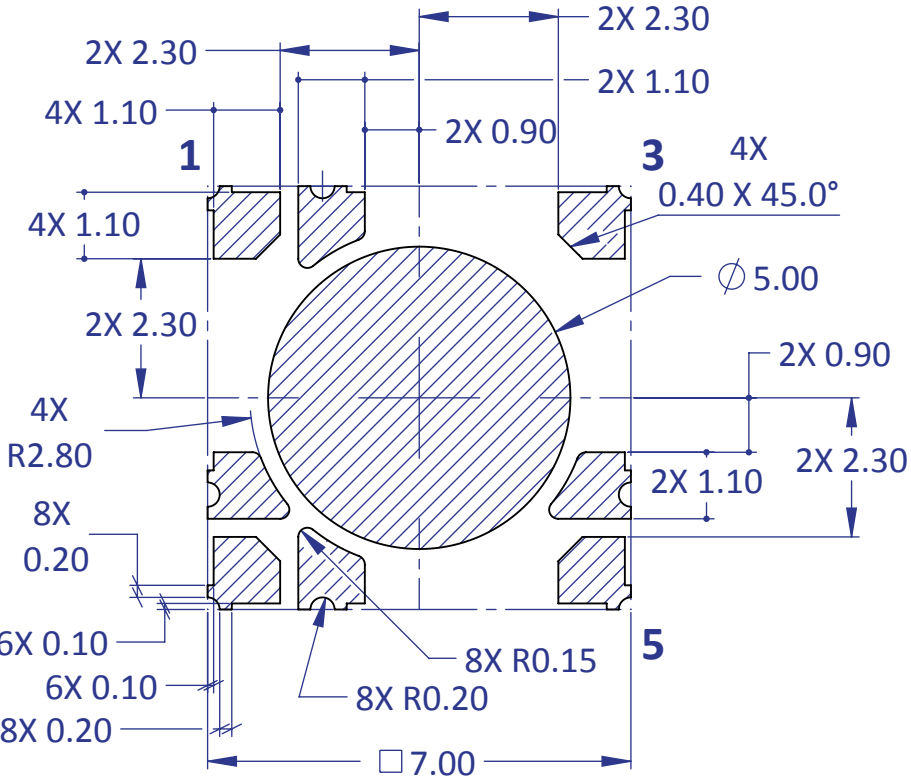
Recommended Exposed Minimum Land Pattern
(For: "PEDESTAL" MCPCB Board Design)



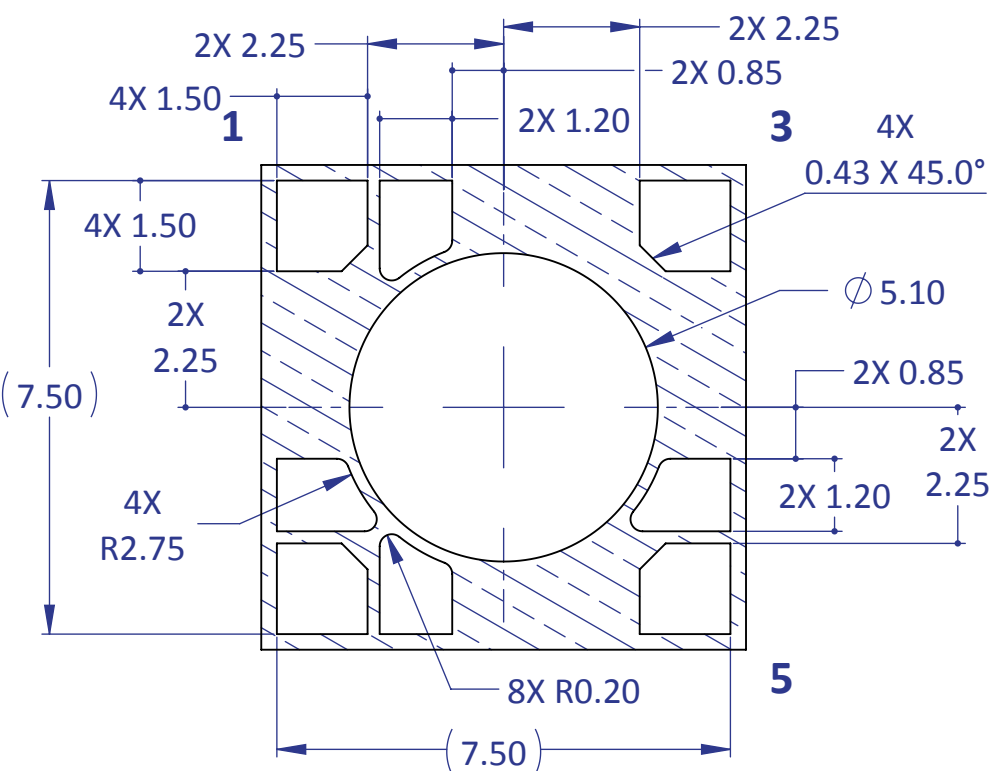
Recommended Apertures for 8mil Stencil
(based on Recommended Exposed Minimum Land Pattern)



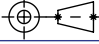
Emitter's Footprint
(For Reference Only)



Recommended Solder Mask Openings
(based on Recommended Exposed Minimum Land Pattern)



NOTES: TOLERANCE BLOCK DOES NOT APPLY.
ALL DIMENSIONS ARE TYPICAL.

<div> Third Angle Projection</div> <div>DIMENSIONS ARE IN MILLIMETERS TOLERANCES:</div> <div><div>.X ± 0.5</div><div>.XX ± 0.25</div><div>.XXX ± 0.10</div><div>Angle ± 1°</div></div>		NAME	DATE	<div>LED Engin, Inc.</div> <div>TITLE: LZ4 Footprint Information</div> <div>(For: "PEDESTAL" MCPCB)</div>		
	DRAWN	DAA	08/04/15			
	CHECKED					
	ENG APPR.					
	MFG APPR.					
MATERIAL:		Q.A.		SIZE	DWG. NO.	REV
N/A	PROPRIETARY AND CONFIDENTIAL					
FINISH:	THE INFORMATION CONTAINED IN THIS DRAWING IS THE SOLE PROPERTY OF LED ENGIN, INC. ANY REPRODUCTION IN PART OR AS A WHOLE WITHOUT THE WRITTEN PERMISSION OF LED ENGIN, INC. IS PROHIBITED.			B	LZ4-Footprint(Ped)-P3	B
N/A						
FILE NAME: LZ4-Footprint(Ped)-P3_RevB				SCALE: 8:1		SHEET 1 OF 1