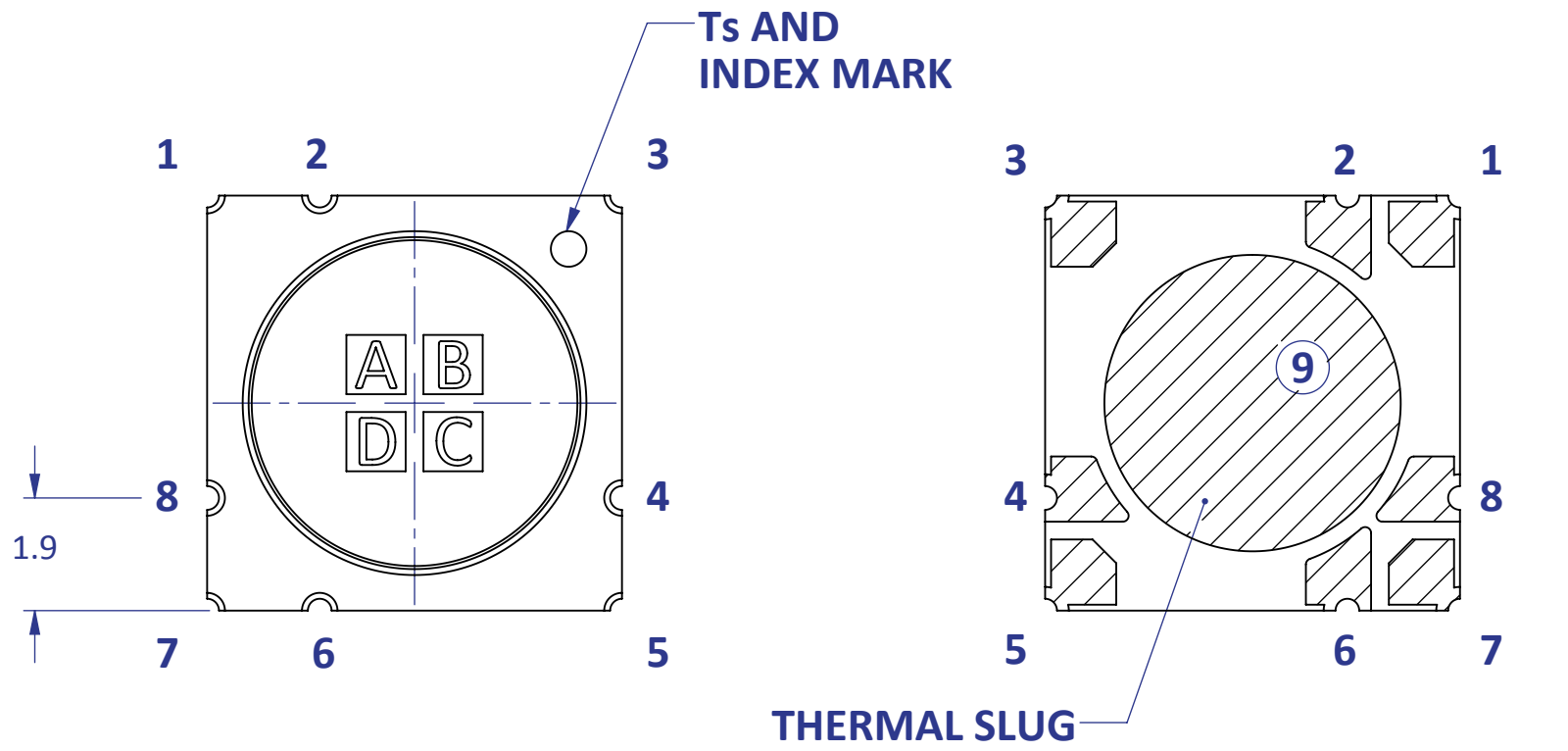
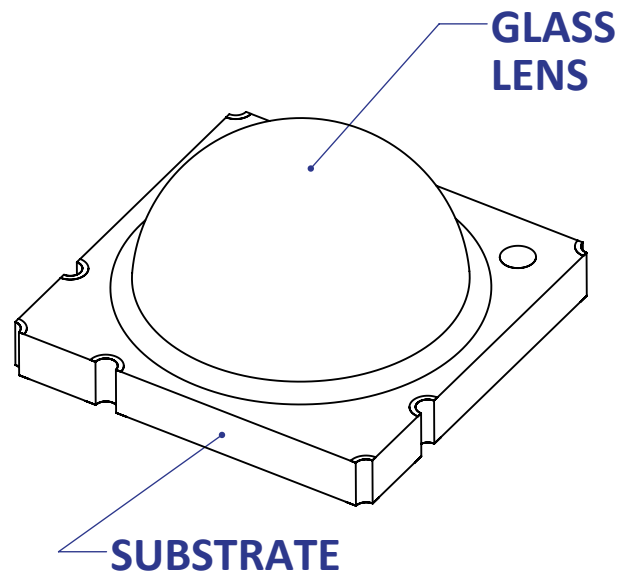
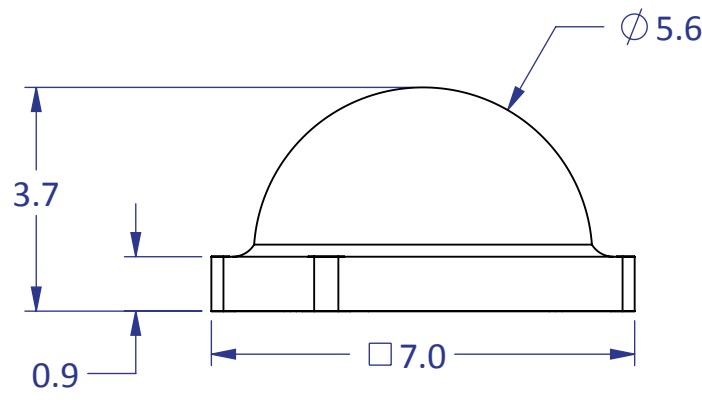


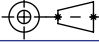
8 7 6 5 4 3 2 1



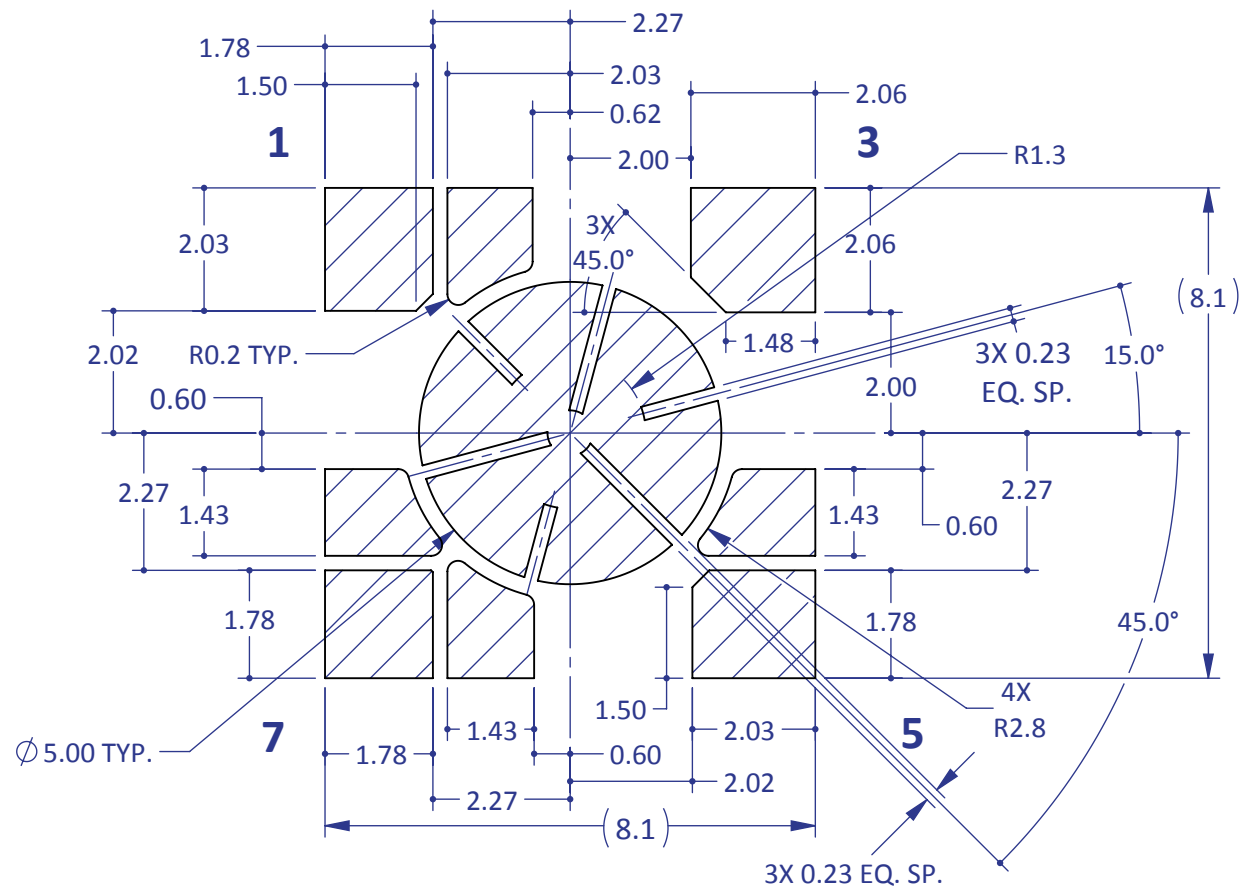
APPLICABLE PN: LZ4-00XX09



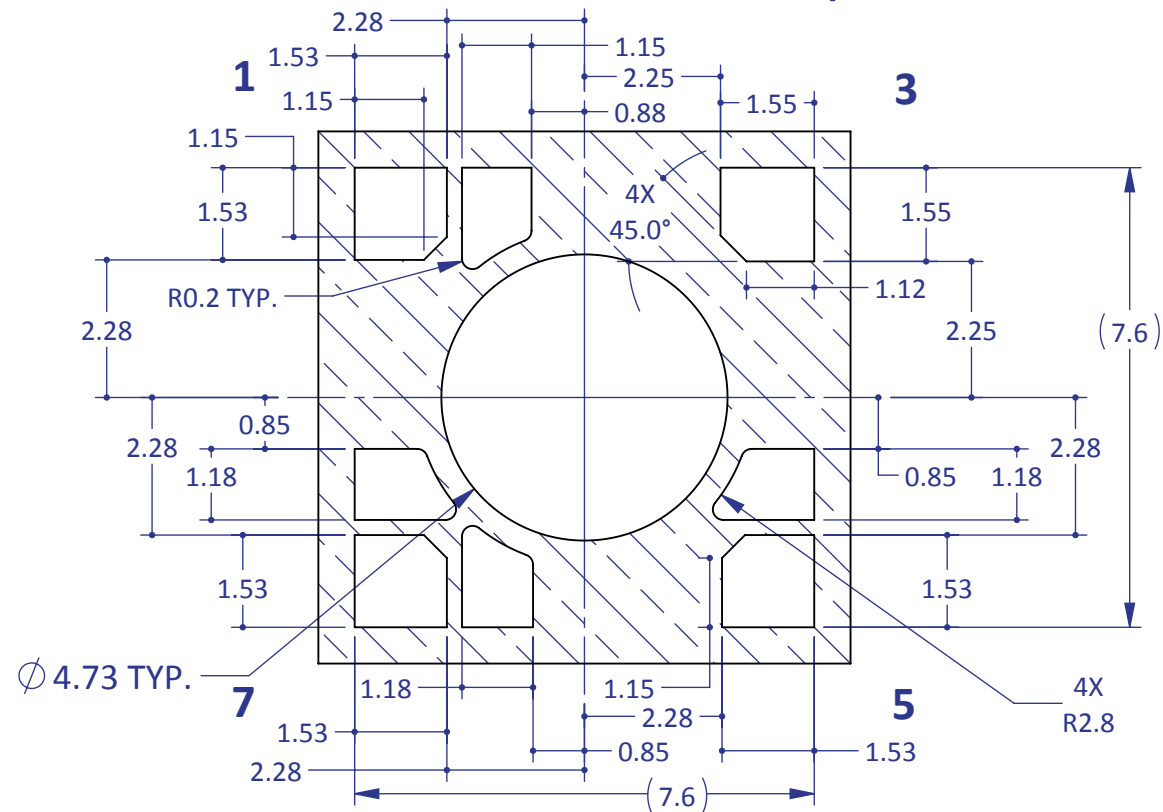
- NOTES:
- 1. TOLERANCE BLOCK DOES NOT APPLY.
 - 2. UNLESS OTHERWISE NOTED, THE GENERAL TOLERANCE IS $\pm 0.20\text{mm}$.

<div></div> <div>Third Angle Projection</div> <div>DIMENSIONS ARE IN MILLIMETERS TOLERANCES:</div> <div><div>.X ± 0.5</div><div>.XX ± 0.25</div><div>.XXX ± 0.10</div><div>Angle ± 1°</div></div>	NAME		DATE	<div>LED Engin, Inc.</div> <div>TITLE:</div> <div>LZ4 (10W) Emitter with Hemispheric Lens on 7mm x 7mm Ceramic (+ Aligned)</div> <div>(SOLID VIEWS)</div>		
	DRAWN	DAA	11/29/12			
	CHECKED					
	ENG APPR.					
	MFG APPR.					
MATERIAL:	Q.A.			<div>SIZE</div> <div>B</div> <div>DWG. NO.</div> <div>LZ4-00XX09-P3</div> <div>REV</div> <div>A1</div>		
FINISH:						
N/A						
FILE NAME: LZ4-00XX09-P3_LZ4-Emitter-Dome-Lens(Customer)			SCALE: 8:1		SHEET 1 OF 2	

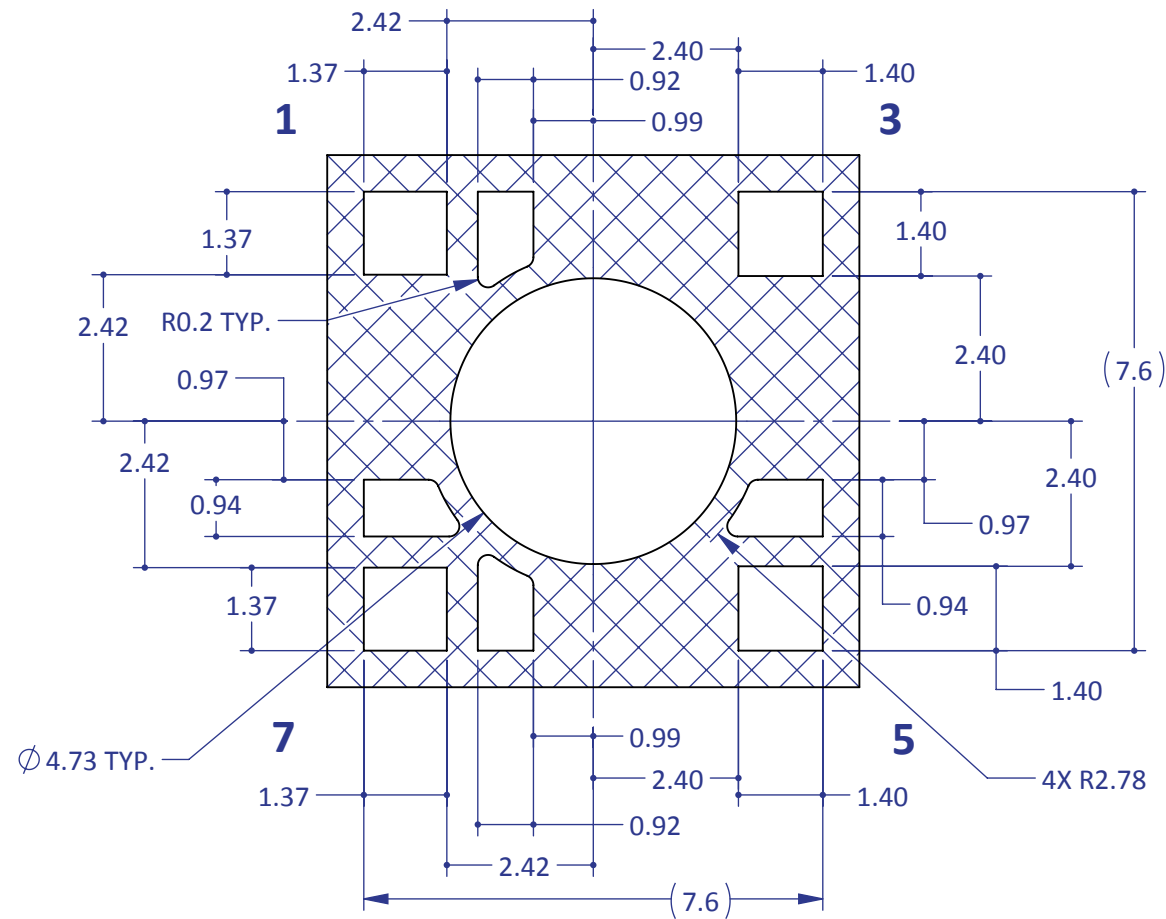
Recommended Exposed Minimum Land Pattern

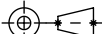


Recommended Solder Mask Opening
(based on Recommended Exposed Minimum Land Pattern)



Recommended 8mil Stencil Apertures
(based on Recommended Exposed Minimum Land Pattern)



<div></div> <div>Third Angle Projection</div> <div>DIMENSIONS ARE IN MILLIMETERS TOLERANCES:</div> <div><div>.X ± 0.5</div><div>.XX ± 0.25</div><div>.XXX ± 0.10</div><div>Angle ± 1°</div></div>	NAME		DATE	<div>LED Engin, Inc.</div> <div>TITLE:</div> <div>LZ4 (10W) Emitter with Hemispheric Lens</div> <div>on 7mm x 7mm Ceramic (+ Aligned)</div>		
	DRAWN	DAA	11/29/12			
	CHECKED					
	ENG APPR.					
	MFG APPR.					
MATERIAL:	Q.A.		<div>PROPRIETARY AND CONFIDENTIAL</div> <div>THE INFORMATION CONTAINED IN THIS DRAWING IS THE SOLE PROPERTY OF LED ENGIN, INC. ANY REPRODUCTION IN PART OR AS A WHOLE WITHOUT THE WRITTEN PERMISSION OF LED ENGIN, INC. IS PROHIBITED.</div>			
N/A						
FINISH:				SIZE	DWG. NO.	REV
N/A				B	LZ4-00XX09-P3	A1
FILE NAME: LZ4-00XX09-P3_LZ4-Emitter-Dome-Lens(Customer)				SCALE: 8:1		SHEET 2 OF 2