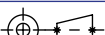
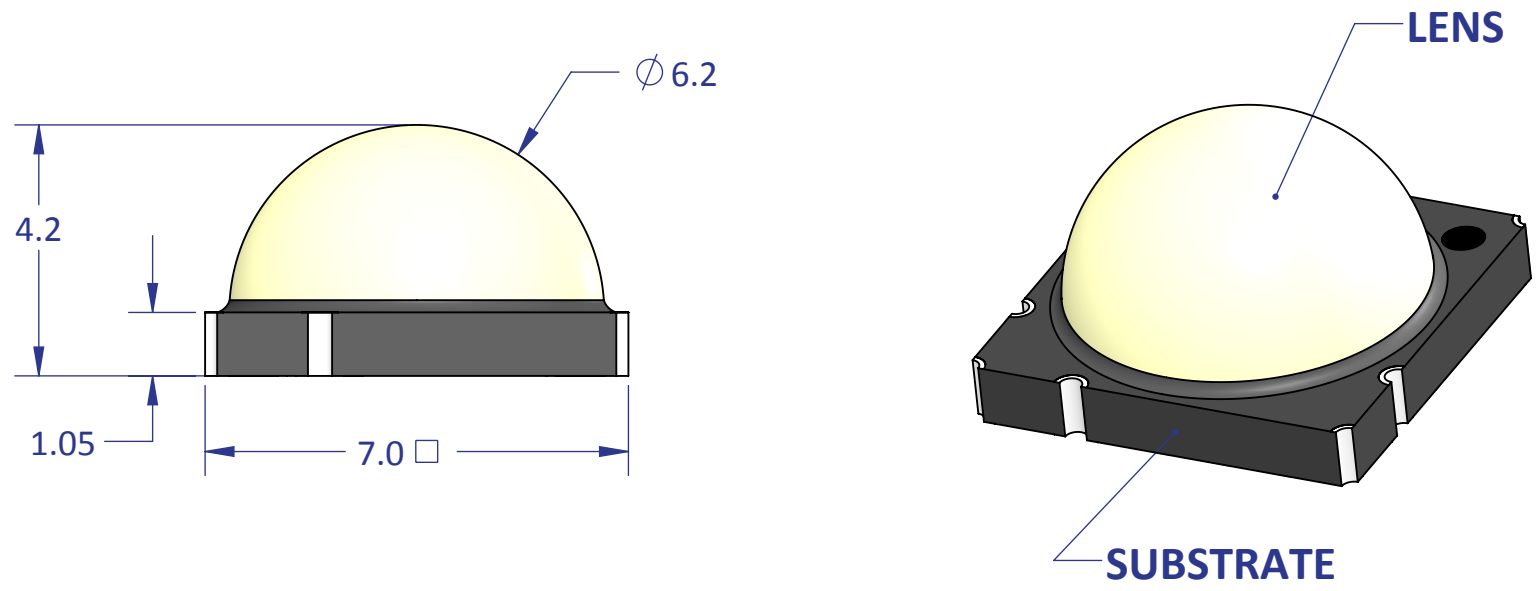
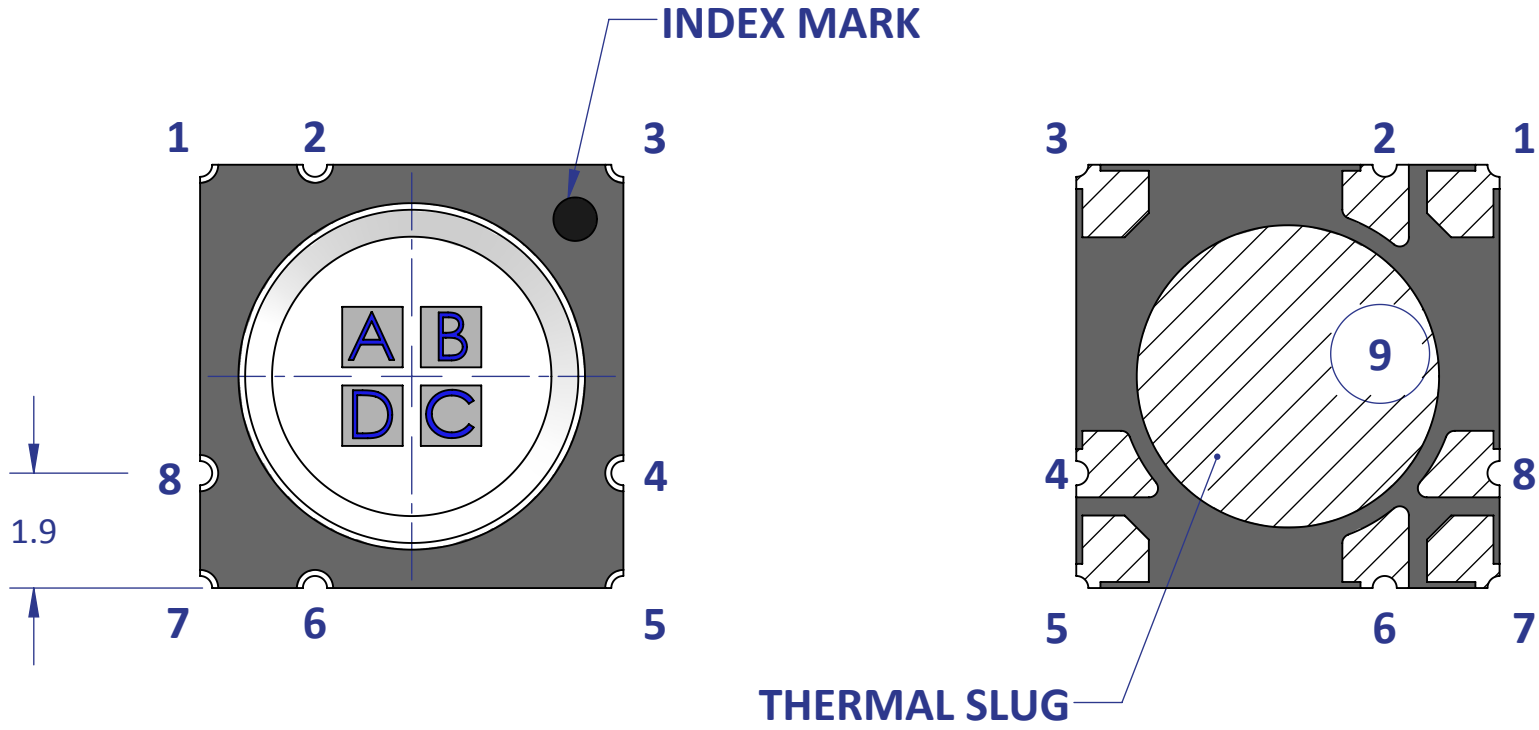


Emitter Pin Out			
Ch.	Pin	Function	Die
1	1	Anode	A
	2	Cathode	
2	3	Anode	B
	4	Cathode	
3	5	Anode	C
	6	Cathode	
4	7	Anode	D
	8	Cathode	

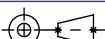
NOTE:
1) TOLERANCE BLOCK DOES NOT APPLY.
2) UNLESS OTHERWISE NOTED ON THE DIMENSIONS, GENERAL TOLERANCE FOR ALL DIMENSIONS IS $\pm 0.20\text{mm}$.

<div> Third Angle Projection</div> <div>DIMENSIONS ARE IN MILLIMETERS TOLERANCES:</div> <div><div>.X ± 0.5</div><div>.XX ± 0.25</div><div>.XXX ± 0.10</div><div>Angle ± 1°</div></div> <div>MATERIAL:<div>N/A</div></div> <div>FINISH:<div>N/A</div></div>	NAME		DATE	<div>LED Engin, Inc.</div>			
	DRAWN	DAA	02/23/11				
	CHECKED			<div>TITLE:</div> <div>LZ4 (10W) LED Package on 7mm x 7mm Ceramic</div>			
	ENG APPR.						
	MFG APPR.						
Q.A.							
PROPRIETARY AND CONFIDENTIAL			<div>SIZE</div> <div>B</div>			<div>DWG. NO.</div> <div>LZ4-0XXX-0707-P3</div>	<div>REV</div> <div>C2</div>
THE INFORMATION CONTAINED IN THIS DRAWING IS THE SOLE PROPERTY OF LED ENGIN, INC. ANY REPRODUCTION IN PART OR AS A WHOLE WITHOUT THE WRITTEN PERMISSION OF LED ENGIN, INC. IS PROHIBITED.							
FILE NAME: LZ4-0XXX-0707-P3_10W-Emitter_RevC				SCALE: 8:1		SHEET 1 OF 3	

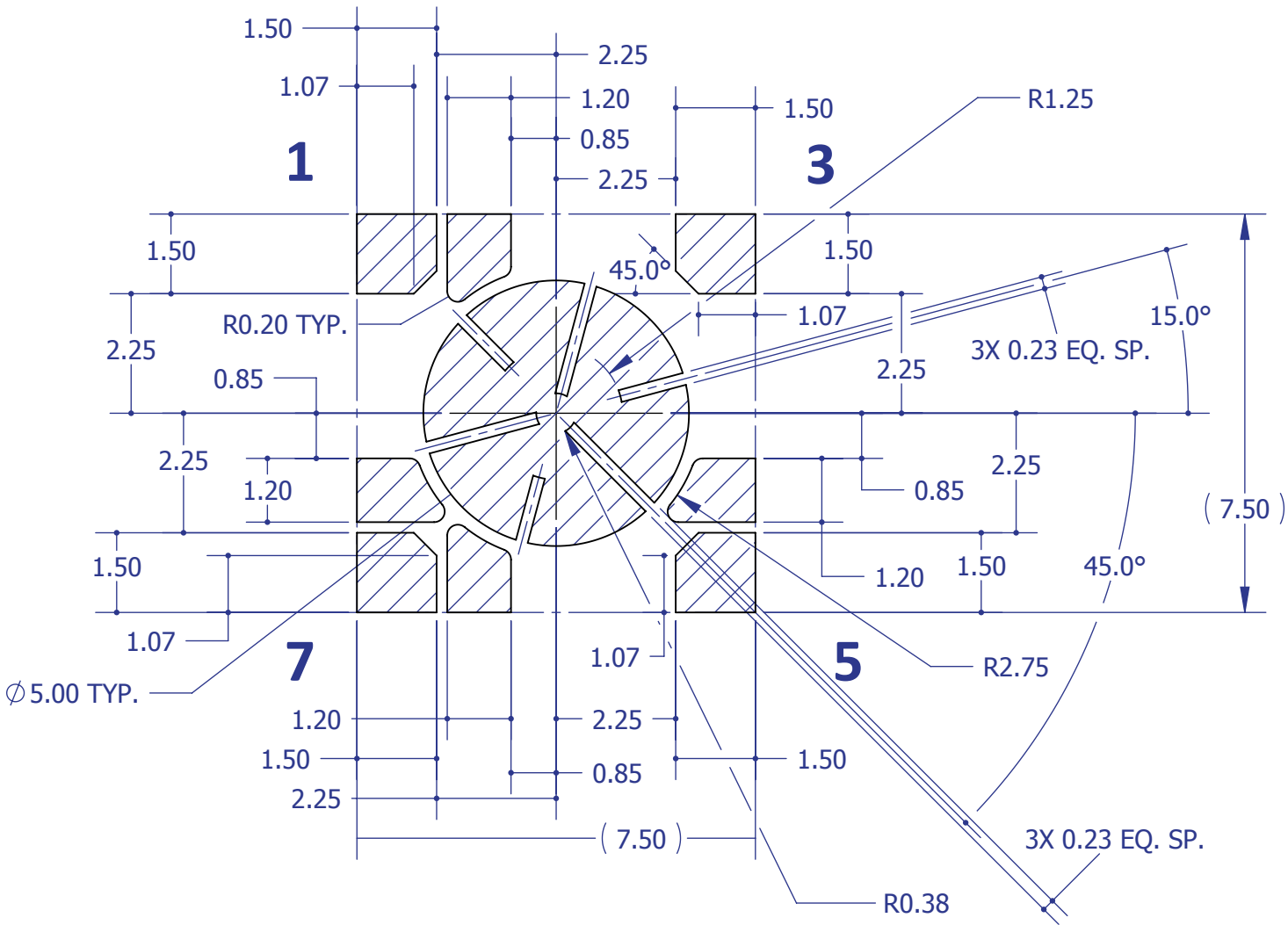


Emitter Pin Out			
Ch.	Pin	Function	Die
1	1	Anode	A
	2	Cathode	
2	3	Anode	B
	4	Cathode	
3	5	Anode	C
	6	Cathode	
4	7	Anode	D
	8	Cathode	

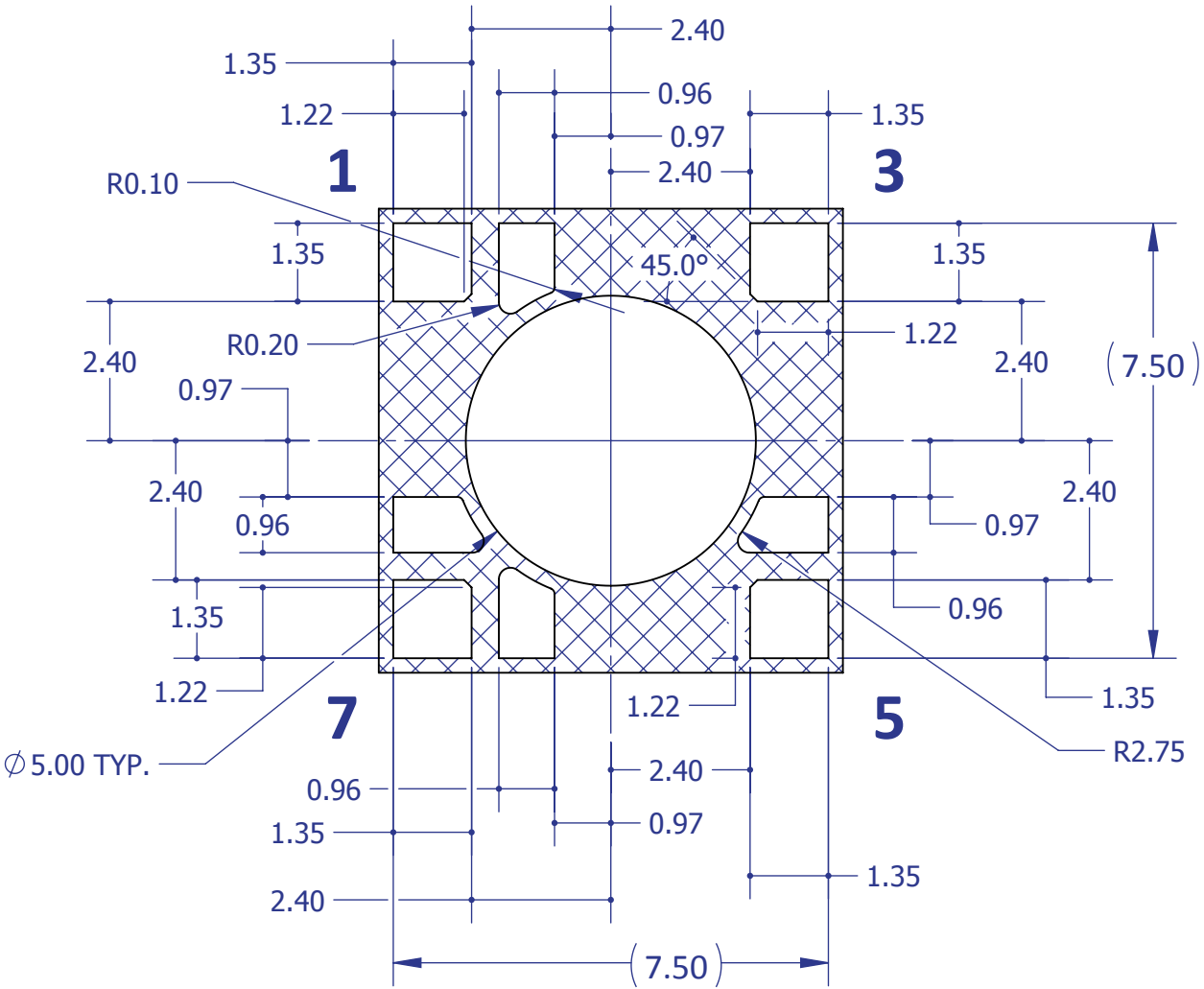
NOTE:
1) TOLERANCE BLOCK DOES NOT APPLY.
2) UNLESS OTHERWISE NOTED ON THE DIMENSIONS, GENERAL TOLERANCE FOR ALL DIMENSIONS IS $\pm 0.20\text{mm}$.

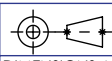
<div>Third Angle Projection</div> <div>DIMENSIONS ARE IN MILLIMETERS TOLERANCES:</div> <div><div>.X ± 0.5</div><div>.XX ± 0.25</div><div>.XXX ± 0.10</div><div>Angle ± 1°</div></div> <div>MATERIAL:<div>N/A</div></div> <div>FINISH:<div>N/A</div></div>	NAME		DATE	<div>LED Engin, Inc.</div>			
	DRAWN	DAA	02/23/11				
	CHECKED			<div>TITLE:</div> <div>LZ4 (10W) LED Package on 7mm x 7mm Ceramic</div>			
	ENG APPR.						
	MFG APPR.						
Q.A.							
PROPRIETARY AND CONFIDENTIAL			<div>SIZE</div> <div>B</div>			<div>DWG. NO.</div> <div>LZ4-0XXX-0707-P3</div>	<div>REV</div> <div>C2</div>
THE INFORMATION CONTAINED IN THIS DRAWING IS THE SOLE PROPERTY OF LED ENGIN, INC. ANY REPRODUCTION IN PART OR AS A WHOLE WITHOUT THE WRITTEN PERMISSION OF LED ENGIN, INC. IS PROHIBITED.							
FILE NAME: LZ4-0XXX-0707-P3_10W-Emitter_RevC				SCALE: 8:1		SHEET 2 OF 3	

Recommended Exposed Minimum Land Pattern



Recommended 8mil Stencil Apertures
(based on Recommended Exposed
Minimum Land Pattern)



 Third Angle Projection DIMENSIONS ARE IN MILLIMETERS TOLERANCES: .X ± 0.5 .XX ± 0.25 .XXX ± 0.10 Angle ± 1° MATERIAL: N/A FINISH: N/A	NAME		DATE	LED Engin, Inc. TITLE: LZ4 (10W) LED Package on 7mm x 7mm Ceramic	
	DRAWN	DAA	02/23/11		
	CHECKED				
	ENG APPR.				
	MFG APPR.				
PROPRIETARY AND CONFIDENTIAL THE INFORMATION CONTAINED IN THIS DRAWING IS THE SOLE PROPERTY OF LED ENGIN, INC. ANY REPRODUCTION IN PART OR AS A WHOLE WITHOUT THE WRITTEN PERMISSION OF LED ENGIN, INC. IS PROHIBITED.				SIZE B	DWG. NO. LZ4-0XXX-0707-P3
FILE NAME: LZ4-0XXX-0707-P3_10W-Emitter_RevC				SCALE: 8:1	REV C2 SHEET 3 OF 3