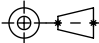
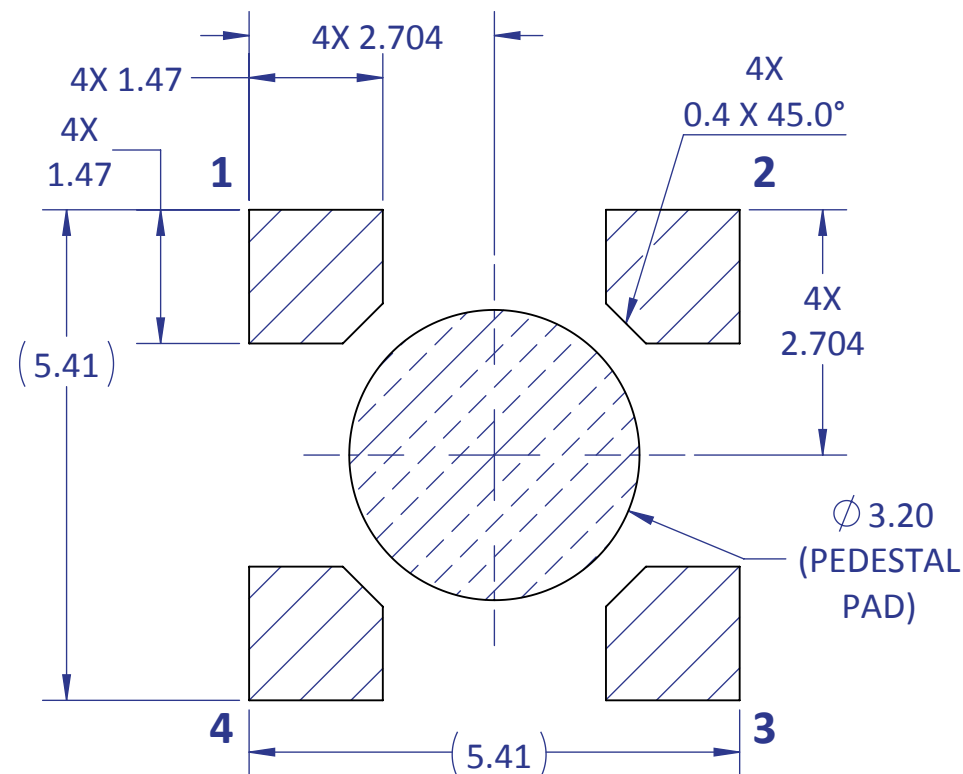


APPLICABLE PN: LZ1-00xx02

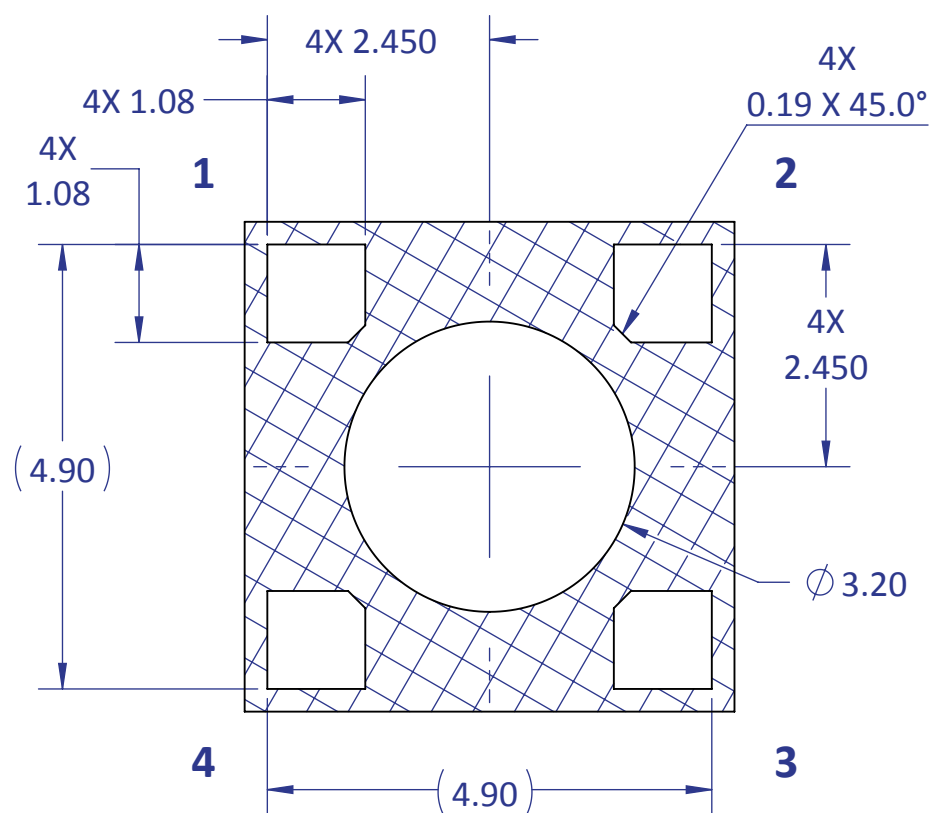
- NOTES:
- 1. TOLERANCE BLOCK DOES NOT APPLY.
 - 2. UNLESS OTHERWISE NOTED ON THE DIMENSIONS, GENERAL TOLERANCE FOR ALL DIMENSIONS IS $\pm 0.20\text{mm}$.

| | | | | | | | | | | | | | | | | | | |
|--|----------------------|--------------|-----|----------|--|---|--|--|--|------|----------|-----|----------|----------------------|-----------|-------------|--|--------------|
|  Third Angle Projection | | NAME | | DATE | | <h1>LED Engin, Inc.</h1> <div>TITLE: LZ1 (1mm Die) EMITTER with DOME LENS on 4.4mm x 4.4mm x 0.75mm CERAMIC (SOLID VIEWS)</div> <table><tr><td>SIZE</td><td>DWG. NO.</td><td>REV</td></tr><tr><td>B</td><td>LZ1-00xx02-P3</td><td>A1</td></tr><tr><td colspan="2">SCALE: 12:1</td><td>SHEET 1 OF 2</td></tr></table> | | | | SIZE | DWG. NO. | REV | B | LZ1-00xx02-P3 | A1 | SCALE: 12:1 | | SHEET 1 OF 2 |
| SIZE | DWG. NO. | REV | | | | | | | | | | | | | | | | |
| B | LZ1-00xx02-P3 | A1 | | | | | | | | | | | | | | | | |
| SCALE: 12:1 | | SHEET 1 OF 2 | | | | | | | | | | | | | | | | |
| DIMENSIONS ARE IN MILLIMETERS TOLERANCES: .X ± 0.5 .XX ± 0.25 .XXX ± 0.10 Angle ± 1° | | DRAWN | DAA | 03/27/14 | | | | | | | | | | | | | | |
| | | CHECKED | | | | | | | | | | | | | | | | |
| | | ENG APPR. | | | | | | | | | | | | | | | | |
| | | MFG APPR. | | | | | | | | | | | | | | | | |
| MATERIAL: N/A | | Q.A. | | | | PROPRIETARY AND CONFIDENTIAL THE INFORMATION CONTAINED IN THIS DRAWING IS THE SOLE PROPERTY OF LED ENGIN, INC. ANY REPRODUCTION IN PART OR AS A WHOLE WITHOUT THE WRITTEN PERMISSION OF LED ENGIN, INC. IS PROHIBITED. | | | | | | | | | | | | |
| FINISH: N/A | | | | | | | | | | | | | | | | | | |
| FILE NAME: LZ1-00xx02-P3(customer)_RevA1 | | | | | | | | | | | | | | | | | | |

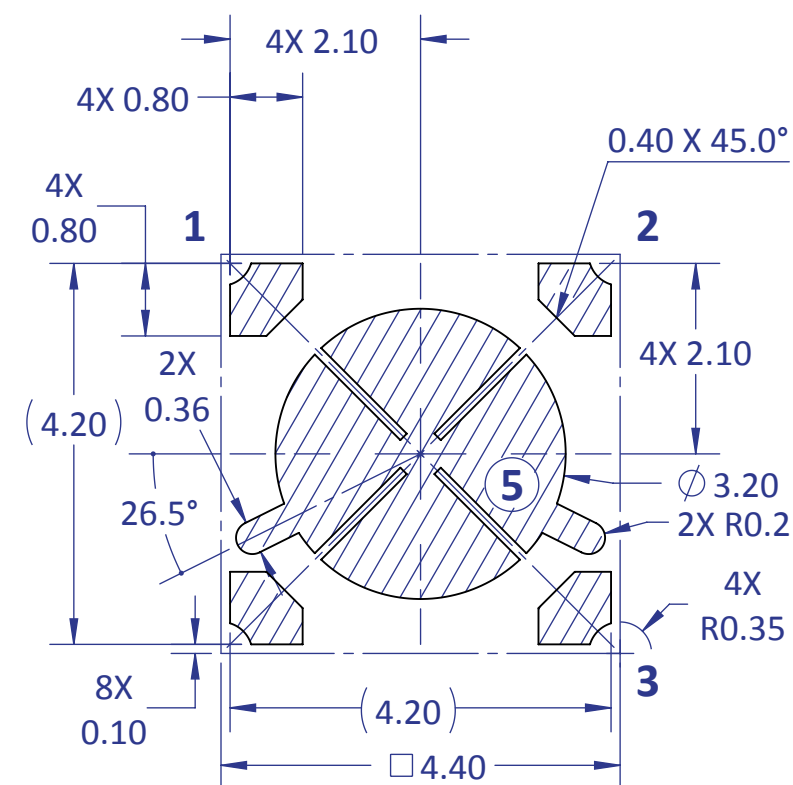
Recommended Exposed Minimum Land Pattern
(For: "PEDESTAL" MCPCB Board Design)



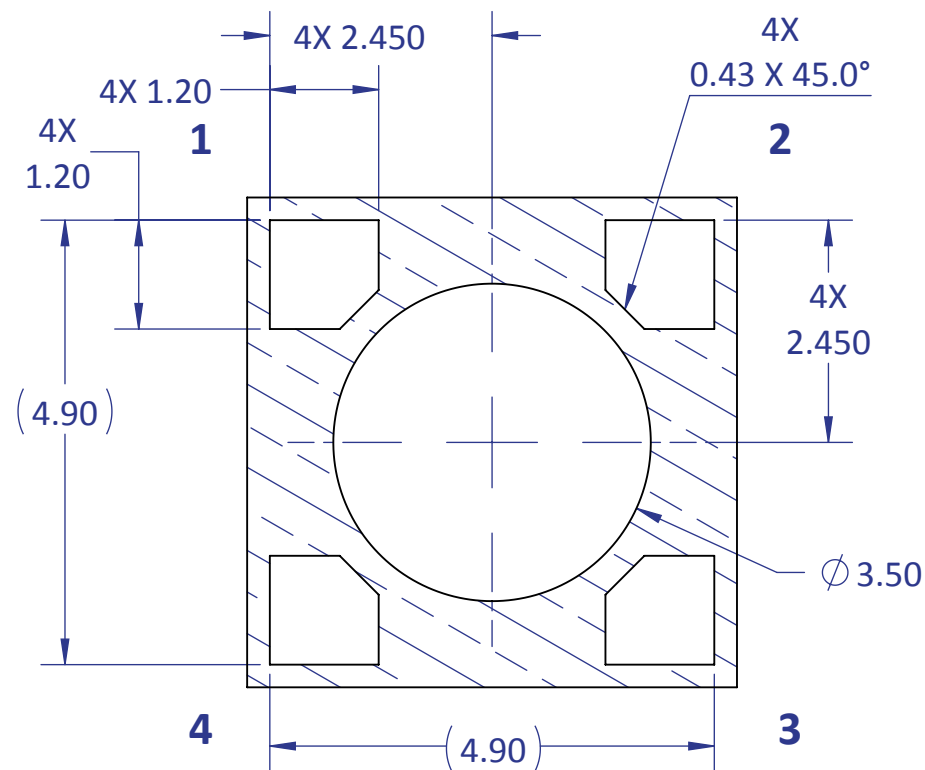
Recommended Apertures for 8mil Stencil
(based on Recommended Exposed Minimum Land Pattern)



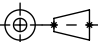
Emitter's Footprint
(For Reference Only)



Recommended Solder Mask Openings
(based on Recommended Exposed Minimum Land Pattern)



NOTES: TOLERANCE BLOCK DOES NOT APPLY.
ALL DIMENSIONS ARE TYPICAL.

| | | | | | |
|---|-----------|-----|----------|---|----------------------------------|
|  Third Angle Projection DIMENSIONS ARE IN MILLIMETERS TOLERANCES: .X ± 0.5 .XX ± 0.25 .XXX ± 0.10 Angle ± 1° MATERIAL: N/A FINISH: N/A FILE NAME: LZ1-00xx02-P3(customer)_RevA1 | NAME | | DATE | LED Engin, Inc. TITLE: LZ1 (1mm Die) EMITTER with DOME LENS on 4.4mm x 4.4mm x 0.75mm CERAMIC (For: "PEDESTAL" MCPCB) | |
| | DRAWN | DAA | 03/27/14 | | |
| | CHECKED | | | | |
| | ENG APPR. | | | | |
| | MFG APPR. | | | | |
| PROPRIETARY AND CONFIDENTIAL THE INFORMATION CONTAINED IN THIS DRAWING IS THE SOLE PROPERTY OF LED ENGIN, INC. ANY REPRODUCTION IN PART OR AS A WHOLE WITHOUT THE WRITTEN PERMISSION OF LED ENGIN, INC. IS PROHIBITED. | | | | SIZE B | DWG. NO. LZ1-00xx02-P3 |
| | | | | REV A1 | |
| | | | | SCALE: 12:1 | |
| | | | | SHEET 2 OF 2 | |