
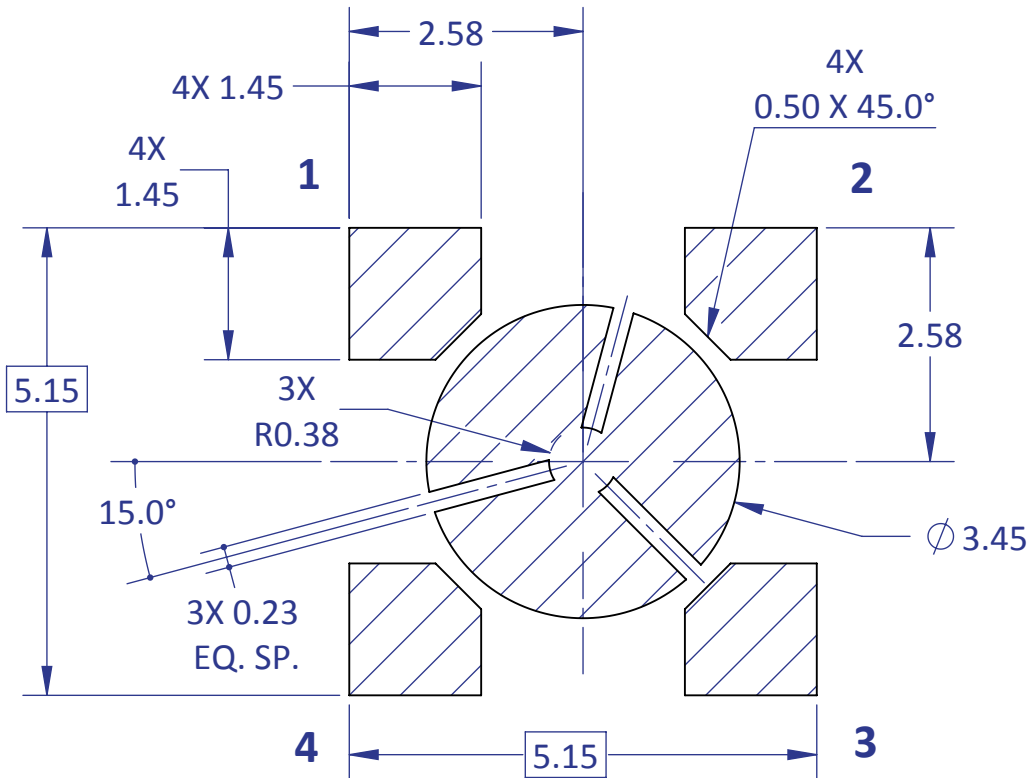


APPLICABLE PN:
1) LZ1-00UA00
2) LZ1-00U600
3) LZ1-00UV00

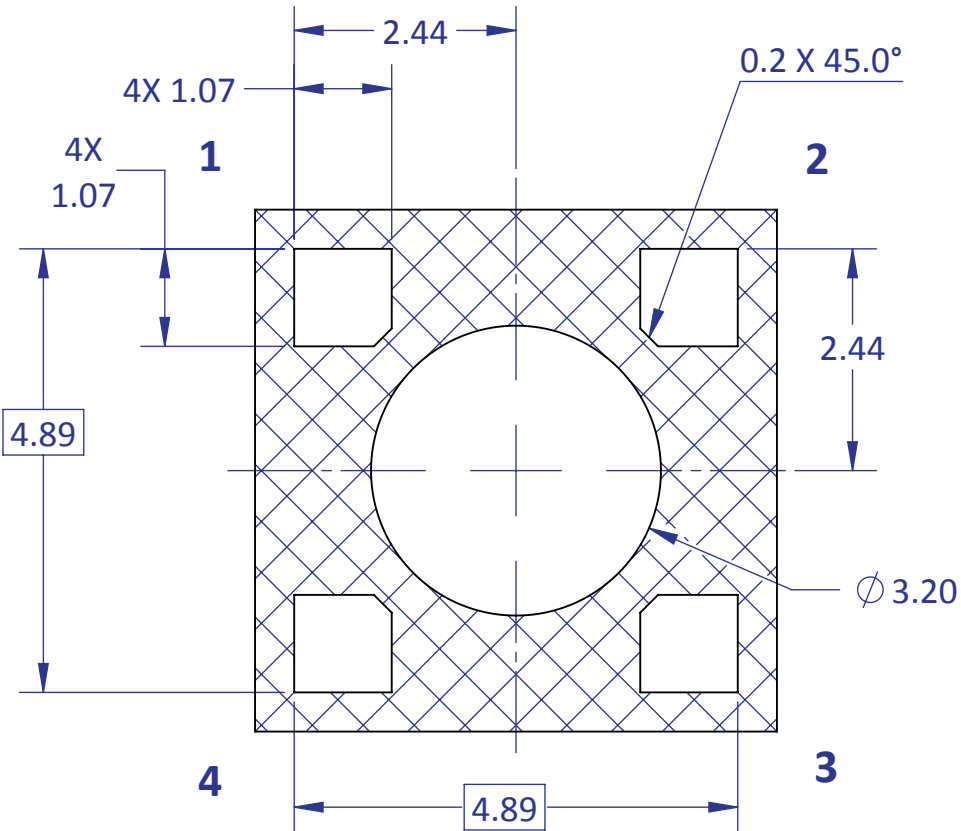
- NOTES:
1. TOLERANCE BLOCK DOES NOT APPLY.
 2. UNLESS OTHERWISE NOTED ON THE DIMENSIONS, GENERAL TOLERANCE FOR ALL DIMENSIONS IS $\pm 0.20\text{mm}$.

 Third Angle Projection DIMENSIONS ARE IN MILLIMETERS TOLERANCES: .X ± 0.5 .XX ± 0.25 .XXX ± 0.10 Angle $\pm 1^\circ$ MATERIAL: N/A FINISH: N/A FILE NAME: LZ1-00Ux00-P3_LZ1(customer)_RevA2	NAME		DATE	LED Engin, Inc. TITLE: LZ1 Emitter on 4.4mm x 4.4mm Ceramic Substrate (Ux) (SOLID VIEWS)	
	DRAWN	DAA	04/30/14		
	CHECKED				
	ENG APPR.				
	MFG APPR.				
PROPRIETARY AND CONFIDENTIAL THE INFORMATION CONTAINED IN THIS DRAWING IS THE SOLE PROPERTY OF LED ENGIN, INC. ANY REPRODUCTION IN PART OR AS A WHOLE WITHOUT THE WRITTEN PERMISSION OF LED ENGIN, INC. IS PROHIBITED.		Q.A.		SIZE	DWG. NO.
				B	LZ1-00Ux00-P3
				REV	A2
				SCALE: 12:1	
				SHEET 1 OF 2	

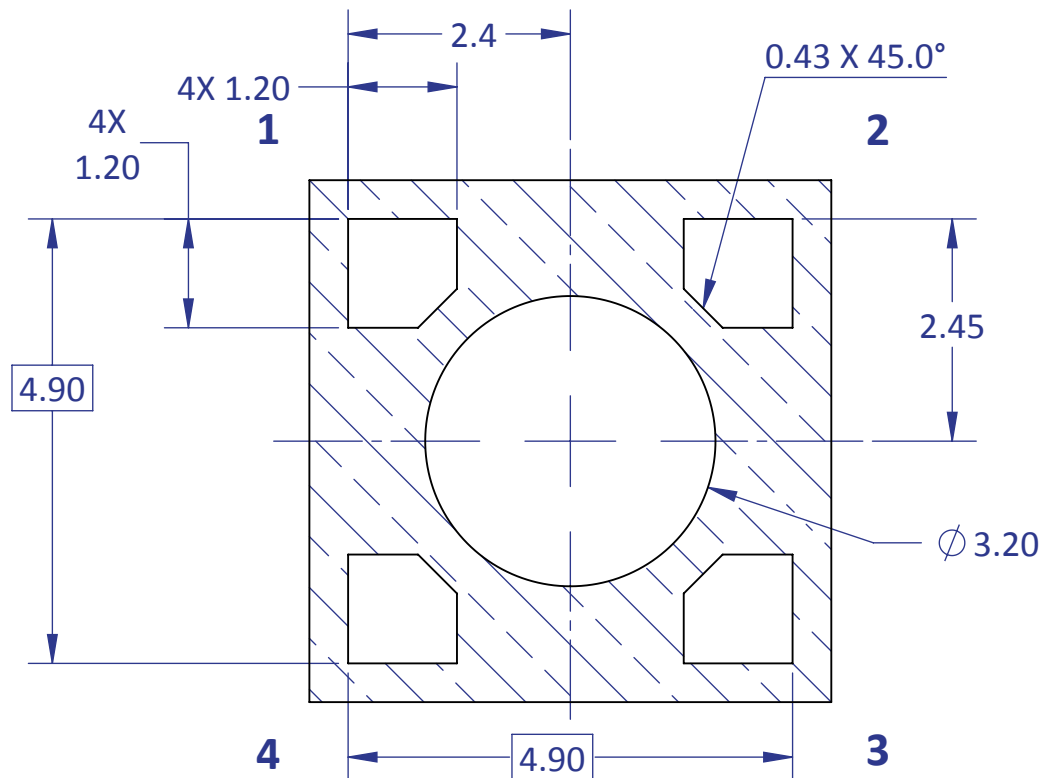
Recommended Exposed Minimum Land Pattern
(Solder Mask Defined)



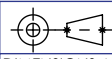
Recommended Apertures for 8mil Stencil
(based on Recommended Exposed
Minimum Land Pattern)



Recommended Solder Mask Openings
(based on Recommended Exposed
Minimum Land Pattern)



NOTES: TOLERANCE BLOCK DOES NOT APPLY.
ALL DIMENSIONS ARE TYPICAL.

 Third Angle Projection DIMENSIONS ARE IN MILLIMETERS TOLERANCES: .X ± 0.5 .XX ± 0.25 .XXX ± 0.10 Angle ± 1° MATERIAL: N/A FINISH: N/A FILE NAME: LZ1-00Ux00-P3_LZ1(customer)_RevA2	NAME		DATE	LED Engin, Inc. TITLE: LZ1 Emitter on 4.4mm x 4.4mm Ceramic Substrate (Ux) SIZE B DWG. NO. LZ1-00Ux00-P3 REV A2	
	DRAWN	DAA	04/30/14		
	CHECKED				
	ENG APPR.				
	MFG APPR.				
Q.A.				SCALE: 12:1	
PROPRIETARY AND CONFIDENTIAL THE INFORMATION CONTAINED IN THIS DRAWING IS THE SOLE PROPERTY OF LED ENGIN, INC. ANY REPRODUCTION IN PART OR AS A WHOLE WITHOUT THE WRITTEN PERMISSION OF LED ENGIN, INC. IS PROHIBITED.				SHEET 2 OF 2	