

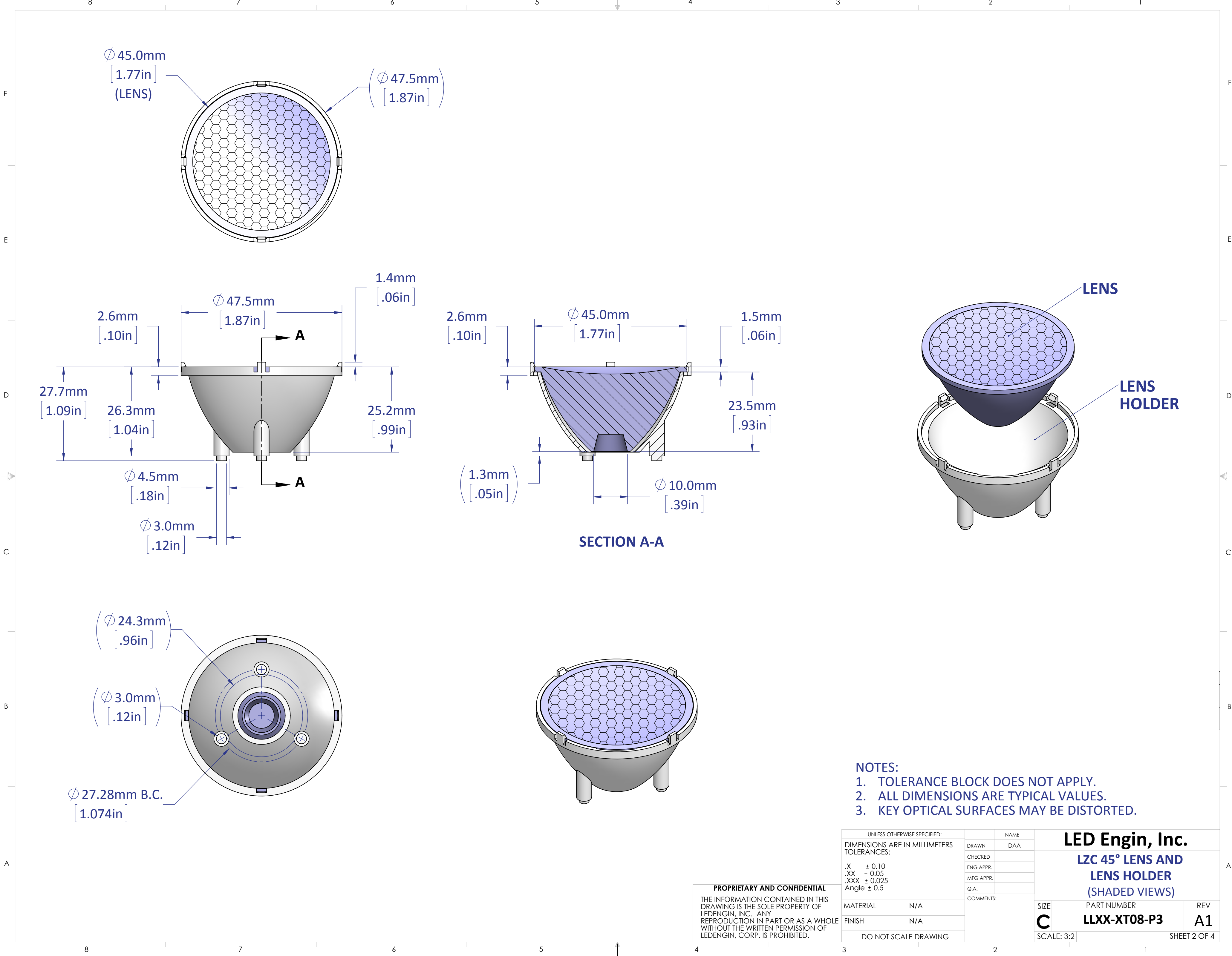
REVISIONS			
REV.	DESCRIPTION	DATE	APPROVED
A1	INITIAL RELEASE	9/6/2012	DAA

- NOTES:
1. TOLERANCE BLOCK DOES NOT APPLY.
 2. ALL DIMENSIONS ARE TYPICAL VALUES.
 3. KEY OPTICAL SURFACES MAY BE DISTORTED.

UNLESS OTHERWISE SPECIFIED:		NAME		<div>LED Engin, Inc.</div> <div>LZC 45° LENS AND LENS HOLDER (SOLID VIEWS)</div>	
DIMENSIONS ARE IN MILLIMETERS TOLERANCES: .X ± 0.10 .XX ± 0.05 .XXX ± 0.025 Angle ± 0.5		DRAWN	DAA		
		CHECKED			
		ENG APPR.			
		MFG APPR.			
		Q.A.			
MATERIAL		N/A		SIZE C SCALE: 3:2	
FINISH		N/A			
DO NOT SCALE DRAWING					
		COMMENTS:		PART NUMBER LLXX-XT08-P3	
				REV A1	
				SHEET 1 OF 4	

PROPRIETARY AND CONFIDENTIAL
THE INFORMATION CONTAINED IN THIS
DRAWING IS THE SOLE PROPERTY OF
LEDENGIN, INC. ANY
REPRODUCTION IN PART OR AS A WHOLE
WITHOUT THE WRITTEN PERMISSION OF
LEDENGIN, CORP. IS PROHIBITED.

LED Engin, Inc.
LZC 45° LENS AND
LENS HOLDER
(SOLID VIEWS)



- NOTES:
1. TOLERANCE BLOCK DOES NOT APPLY.
 2. ALL DIMENSIONS ARE TYPICAL VALUES.
 3. KEY OPTICAL SURFACES MAY BE DISTORTED.

PROPRIETARY AND CONFIDENTIAL

THE INFORMATION CONTAINED IN THIS DRAWING IS THE SOLE PROPERTY OF LEDENGIN, INC. ANY REPRODUCTION IN PART OR AS A WHOLE WITHOUT THE WRITTEN PERMISSION OF LEDENGIN, CORP. IS PROHIBITED.

UNLESS OTHERWISE SPECIFIED:		NAME		
DIMENSIONS ARE IN MILLIMETERS TOLERANCES: .X ± 0.10 .XX ± 0.05 .XXX ± 0.025 Angle ± 0.5		DRAWN	DAA	
		CHECKED		
		ENG APPR.		
		MFG APPR.		
		Q.A.		
MATERIAL		COMMENTS:		
FINISH				
DO NOT SCALE DRAWING				
		SIZE	PART NUMBER	REV
		C	LLXX-XT08-P3	A1
		SCALE: 3:2	SHEET 2 OF 4	

LED Engin, Inc.

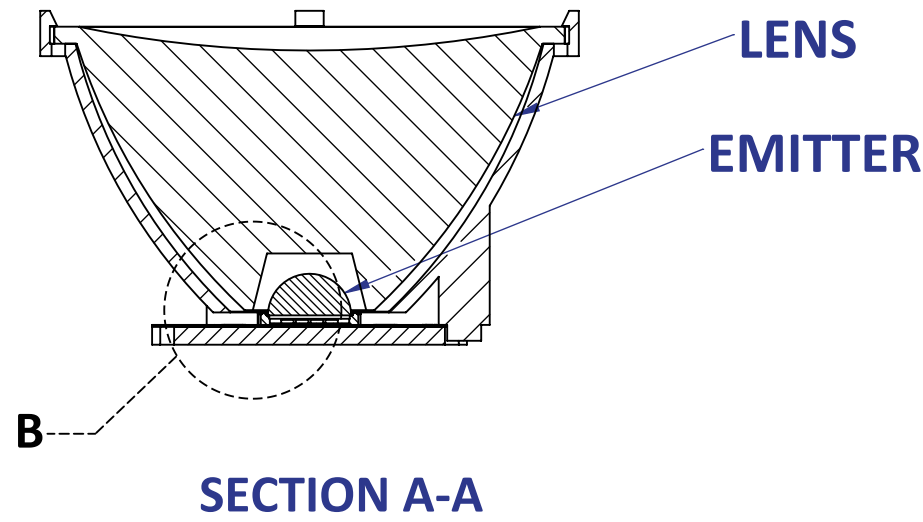
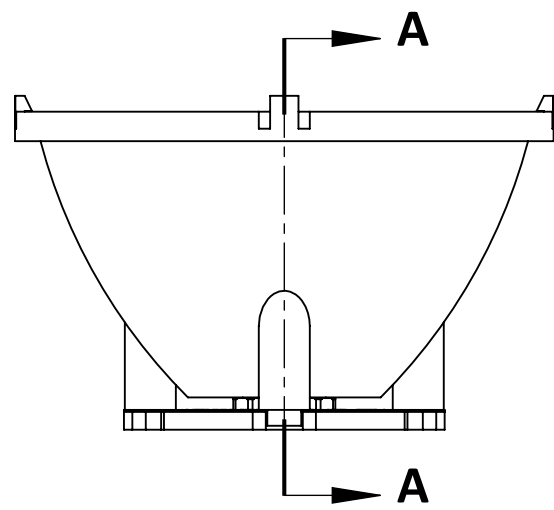
LZC 45° LENS AND
LENS HOLDER
(SHADED VIEWS)

LED Engin, Inc.

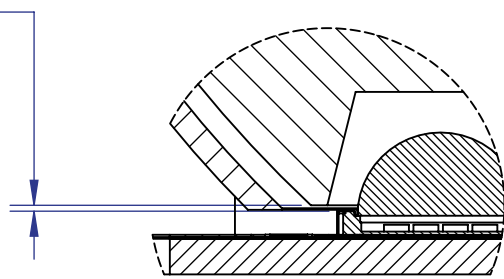
LZC 45° LENS AND

LENS HOLDER

(SHADED VIEWS)

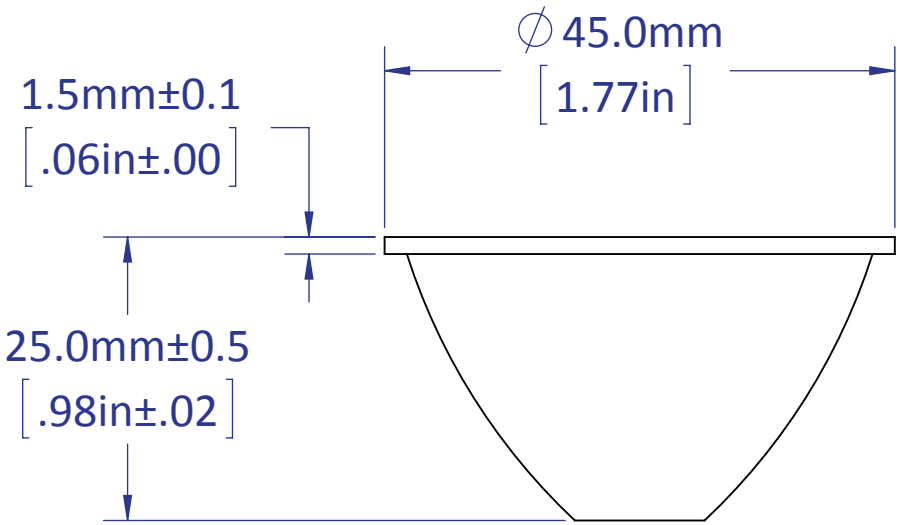


0.26mm±0.25
[.010in±.010]
(GAP BETWEEN BOTTOM
OF LENS AND TOP
OF EMITTER'S CERAMIC
SURFACE)



DETAIL B
SCALE 3 : 1

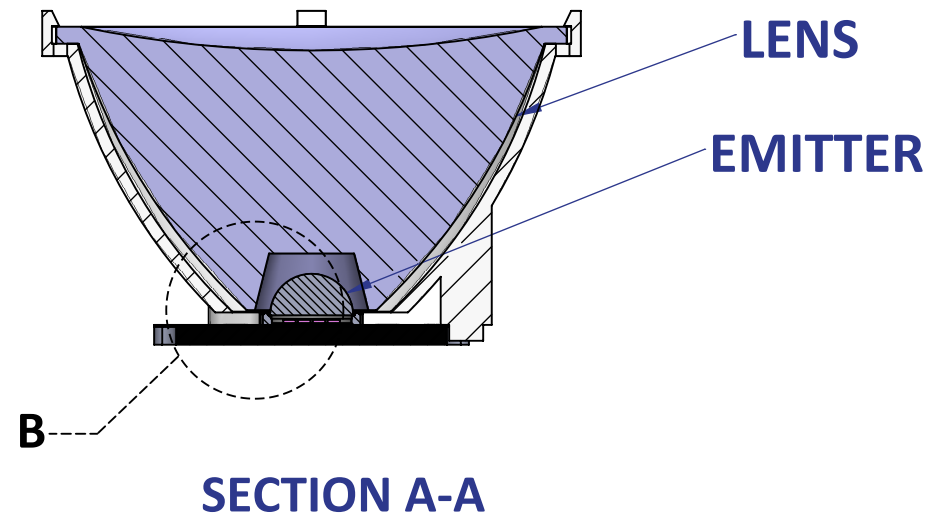
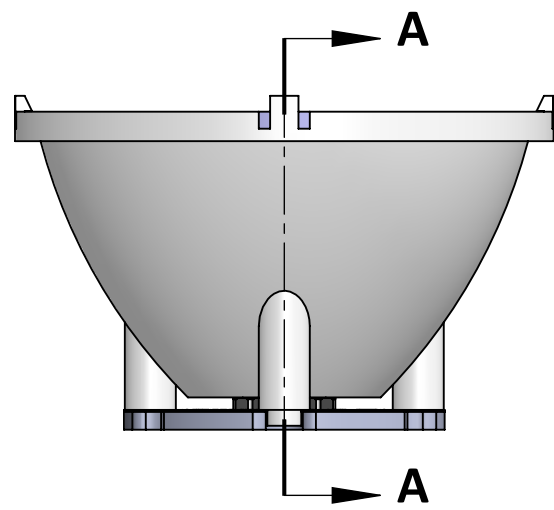
LENS ONLY



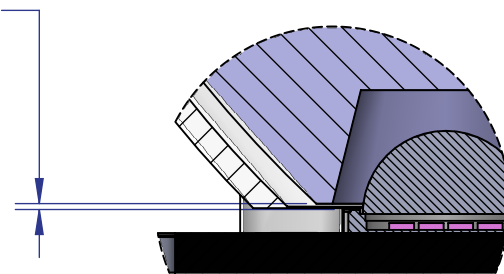
- NOTES:
1. TOLERANCE BLOCK DOES NOT APPLY.
 2. ALL DIMENSIONS ARE TYPICAL VALUES.
 3. KEY OPTICAL SURFACES MAY BE DISTORTED.

PROPRIETARY AND CONFIDENTIAL
THE INFORMATION CONTAINED IN THIS
DRAWING IS THE SOLE PROPERTY OF
LEDENGIN, INC. ANY
REPRODUCTION IN PART OR AS A WHOLE
WITHOUT THE WRITTEN PERMISSION OF
LEDENGIN, CORP. IS PROHIBITED.

UNLESS OTHERWISE SPECIFIED:		NAME		<div>LED Engin, Inc.</div> <div>LZC 45° LENS AND LENS HOLDER</div> <div>(LENS/EMITTER: SOLID VIEWS)</div>				
DIMENSIONS ARE IN MILLIMETERS TOLERANCES: .X ± 0.10 .XX ± 0.05 .XXX ± 0.025 Angle ± 0.5		DRAWN	DAA					
		CHECKED						
		ENG APPR.						
		MFG APPR.						
MATERIAL N/A		Q.A.		SIZE C	PART NUMBER LLXX-XT08-P3	REV A1		
FINISH N/A		COMMENTS:						
DO NOT SCALE DRAWING								
SCALE: 3:2				SHEET 3 OF 4				

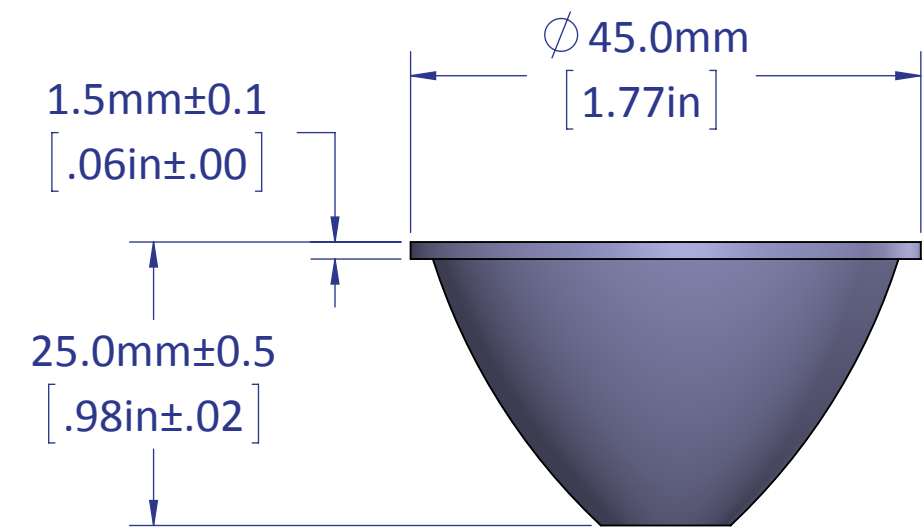


0.26mm±0.25
[.010in±.010]
(GAP BETWEEN BOTTOM
OF LENS AND TOP
OF EMITTER'S CERAMIC
SURFACE)



DETAIL B
SCALE 3 : 1

LENS ONLY



- NOTES:
1. TOLERANCE BLOCK DOES NOT APPLY.
 2. ALL DIMENSIONS ARE TYPICAL VALUES.
 3. KEY OPTICAL SURFACES MAY BE DISTORTED.

PROPRIETARY AND CONFIDENTIAL
THE INFORMATION CONTAINED IN THIS
DRAWING IS THE SOLE PROPERTY OF
LEDENGIN, INC. ANY
REPRODUCTION IN PART OR AS A WHOLE
WITHOUT THE WRITTEN PERMISSION OF
LEDENGIN, CORP. IS PROHIBITED.

UNLESS OTHERWISE SPECIFIED:		NAME		<div>LED Engin, Inc.</div> <div>LZC 45° LENS AND LENS HOLDER</div> <div>(LENS/EMITTER: SHADED VIEWS)</div>		
DIMENSIONS ARE IN MILLIMETERS TOLERANCES: .X ± 0.10 .XX ± 0.05 .XXX ± 0.025 Angle ± 0.5		DRAWN	DAA			
		CHECKED				
		ENG APPR.				
		MFG APPR.				
MATERIAL		N/A	COMMENTS:	SIZE	PART NUMBER	REV
FINISH		N/A		C	LLXX-XT08-P3	A1
DO NOT SCALE DRAWING					SCALE: 3:2	SHEET 4 OF 4