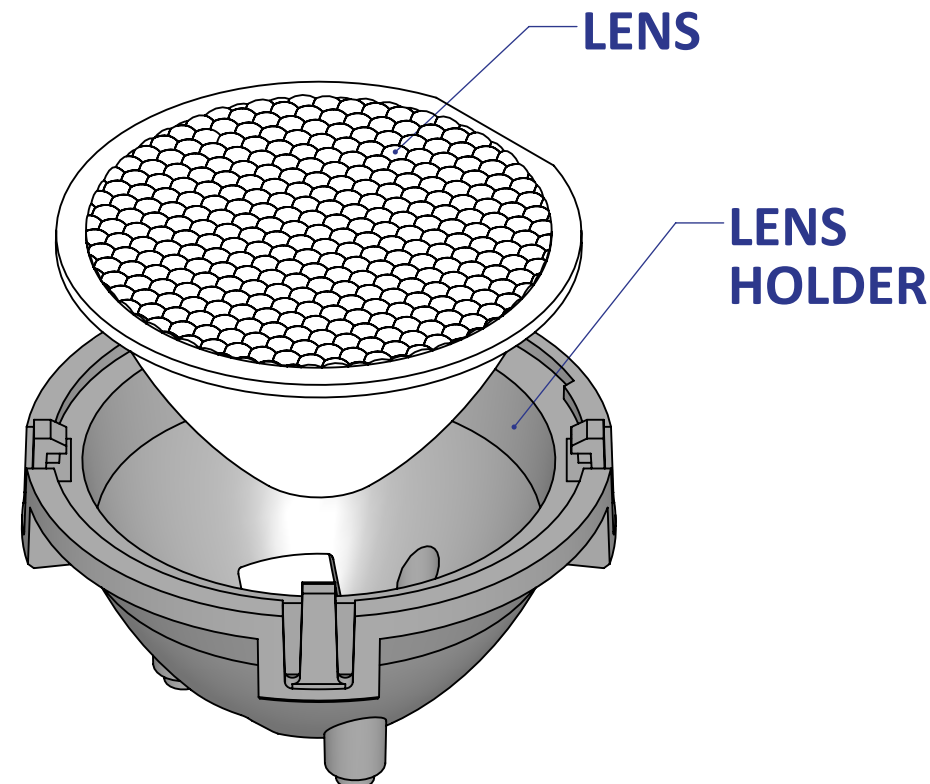
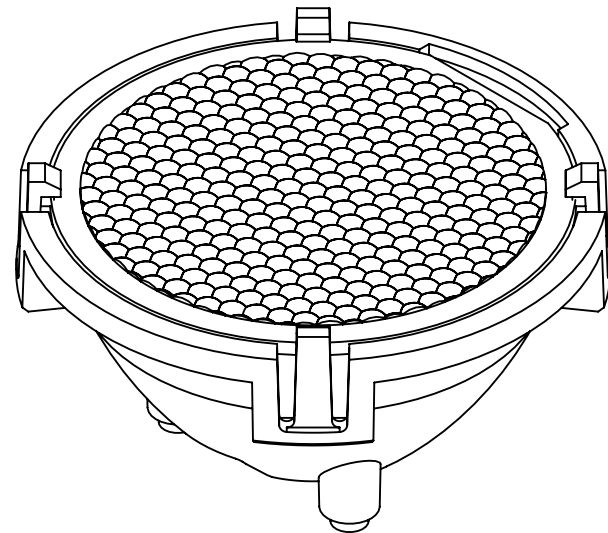
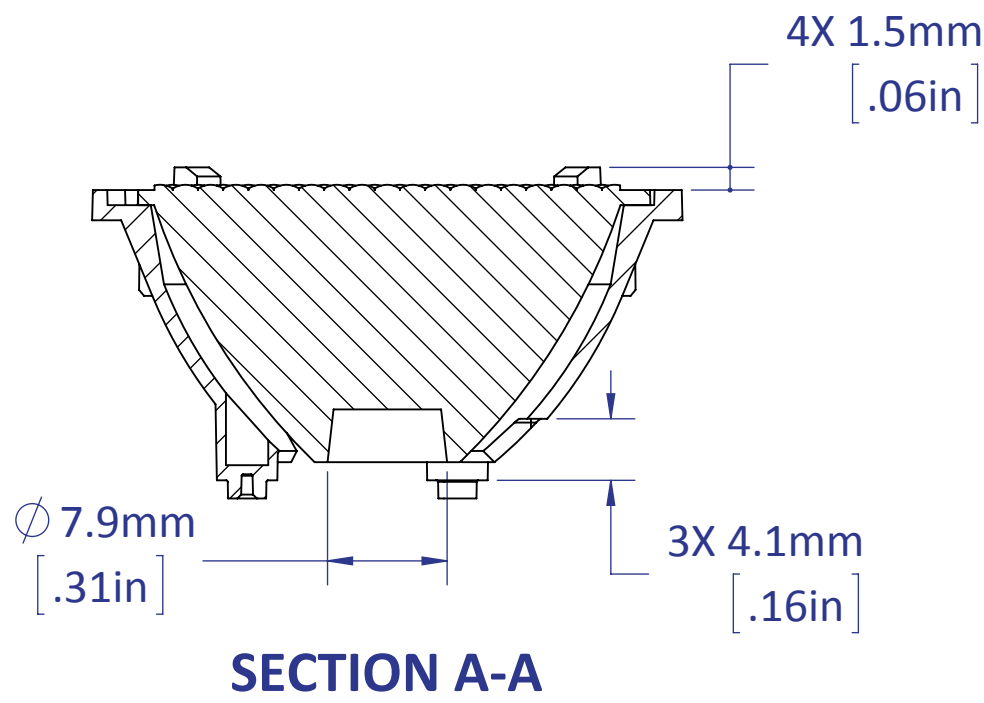
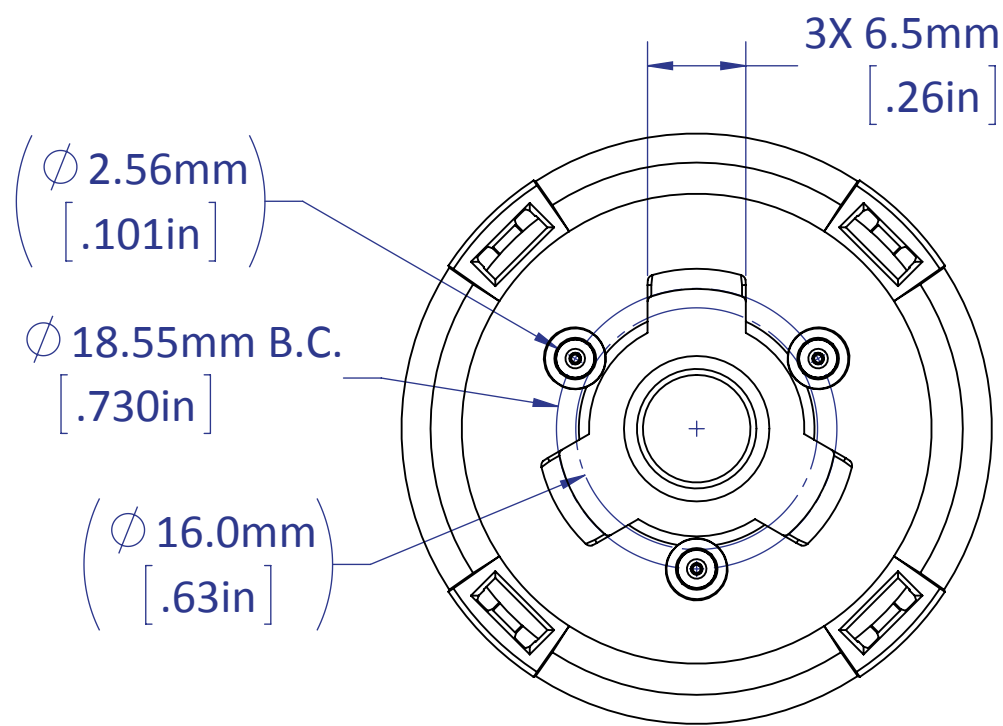
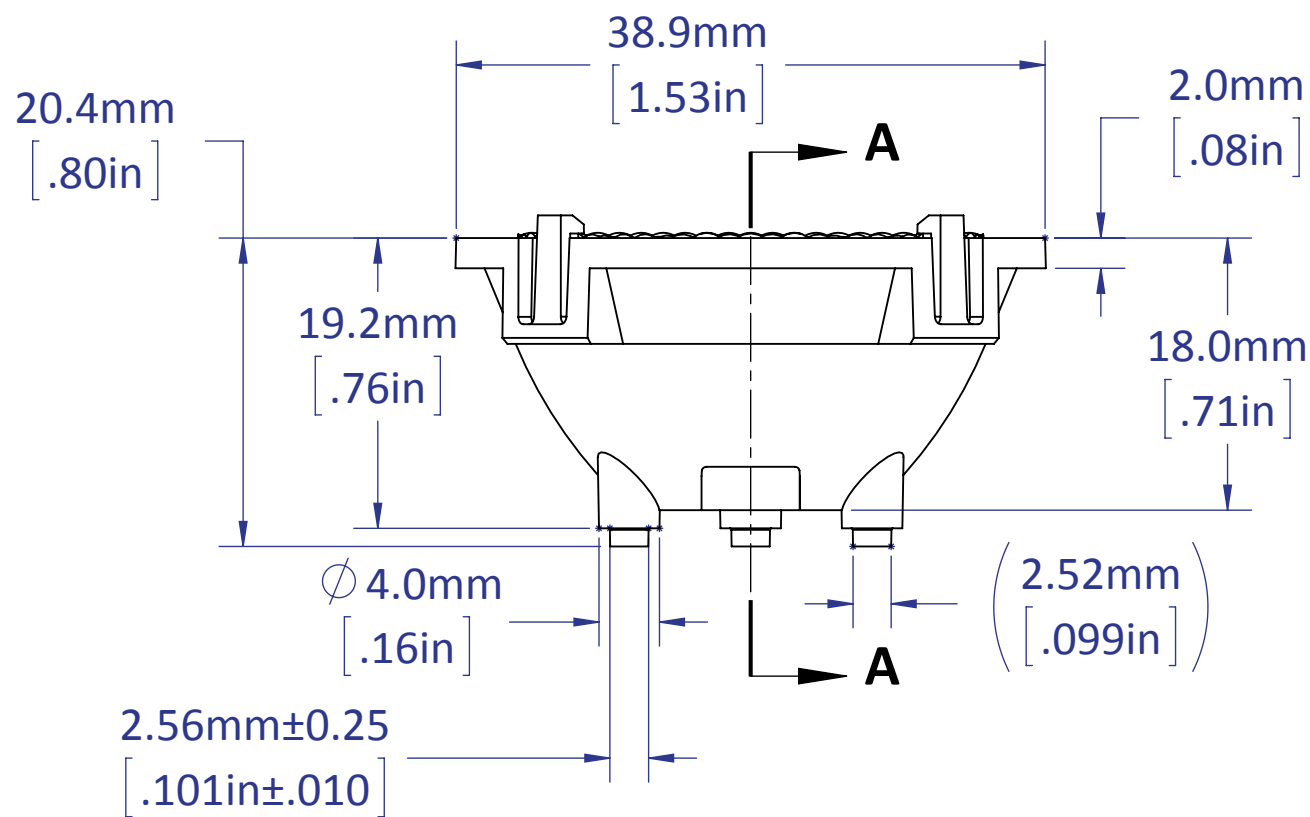
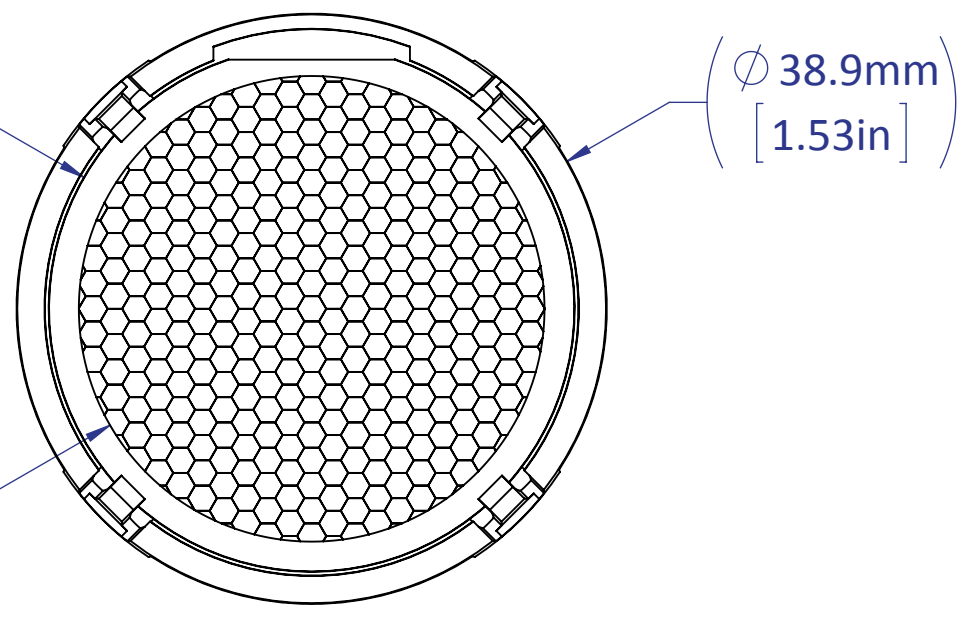


F
E
D
C
B
A

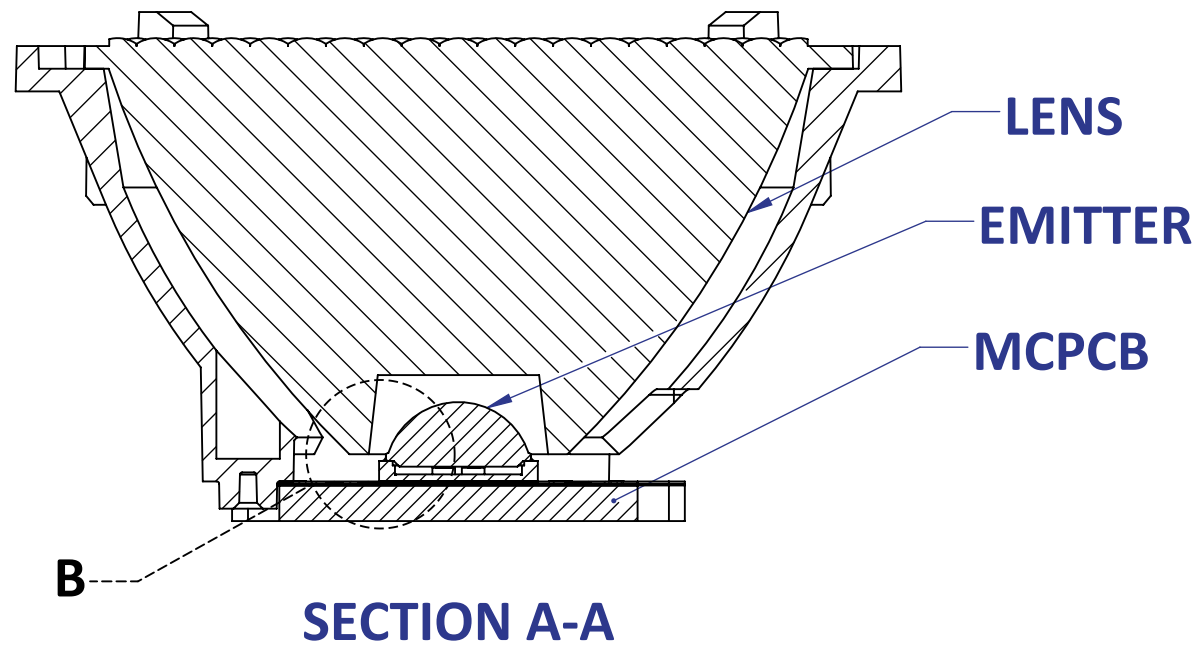
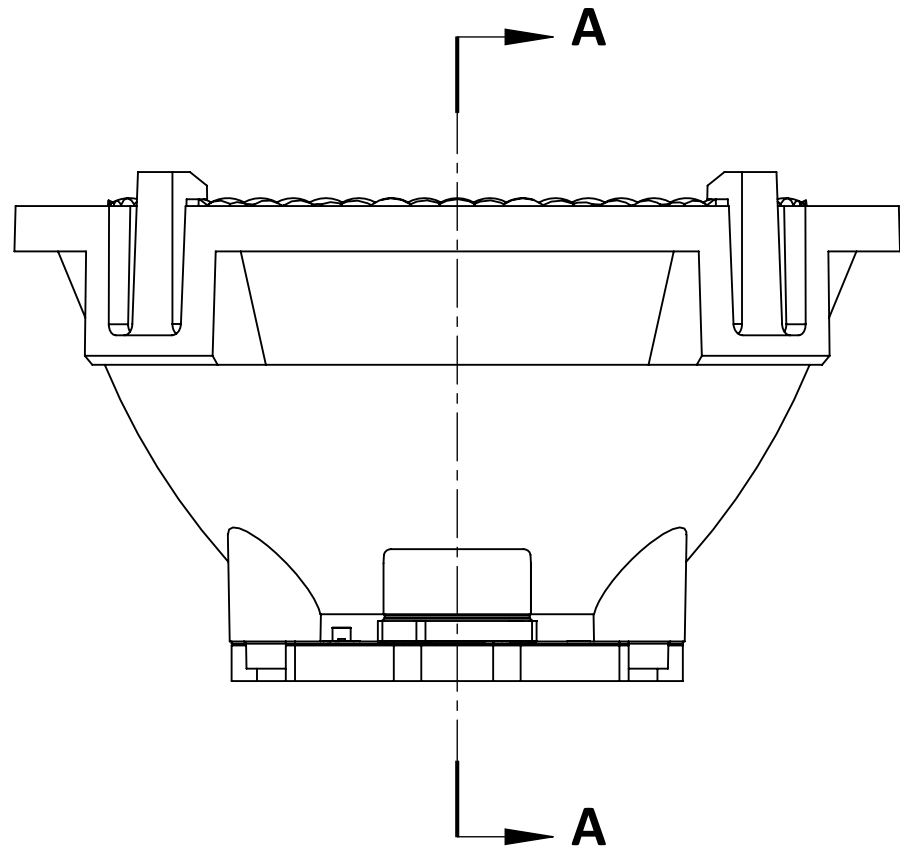


- NOTES:
1. TOLERANCE BLOCK DOES NOT APPLY.
 2. UNLESS OTHERWISE NOTED, GENERAL TOLERANCE IS $\pm 0.5\text{mm}$.
 3. KEY OPTICAL SURFACES MAY BE DISTORTED.

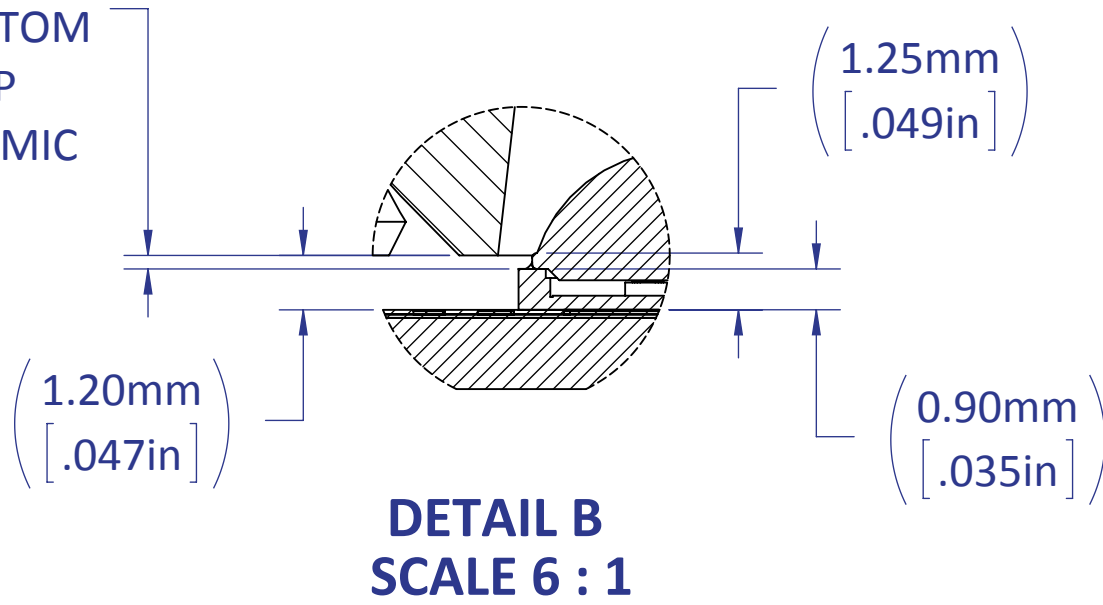
PROPRIETARY AND CONFIDENTIAL
THE INFORMATION CONTAINED IN THIS DRAWING IS THE SOLE PROPERTY OF LEDENGIN, INC. ANY REPRODUCTION IN PART OR AS A WHOLE WITHOUT THE WRITTEN PERMISSION OF LEDENGIN, CORP. IS PROHIBITED.

UNLESS OTHERWISE SPECIFIED:		NAME		<div>LED Engin, Inc.</div> <div>LZ4-SERIES LENS</div> <div>AND LENS HOLDER</div> <div>(SOLID VIEWS)</div>		
DIMENSIONS ARE IN MILLIMETERS TOLERANCES: .X ± 0.10 .XX ± 0.05 .XXX ± 0.025 Angle ± 0.5		DRAWN	DAA			
		CHECKED				
		ENG APPR.				
		MFG APPR.				
MATERIAL		N/A	COMMENTS:	SIZE	PART NUMBER	REV
FINISH		N/A		C	LLxx-2T06-P3	E
DO NOT SCALE DRAWING					SCALE: 2:1	SHEET 1 OF 2

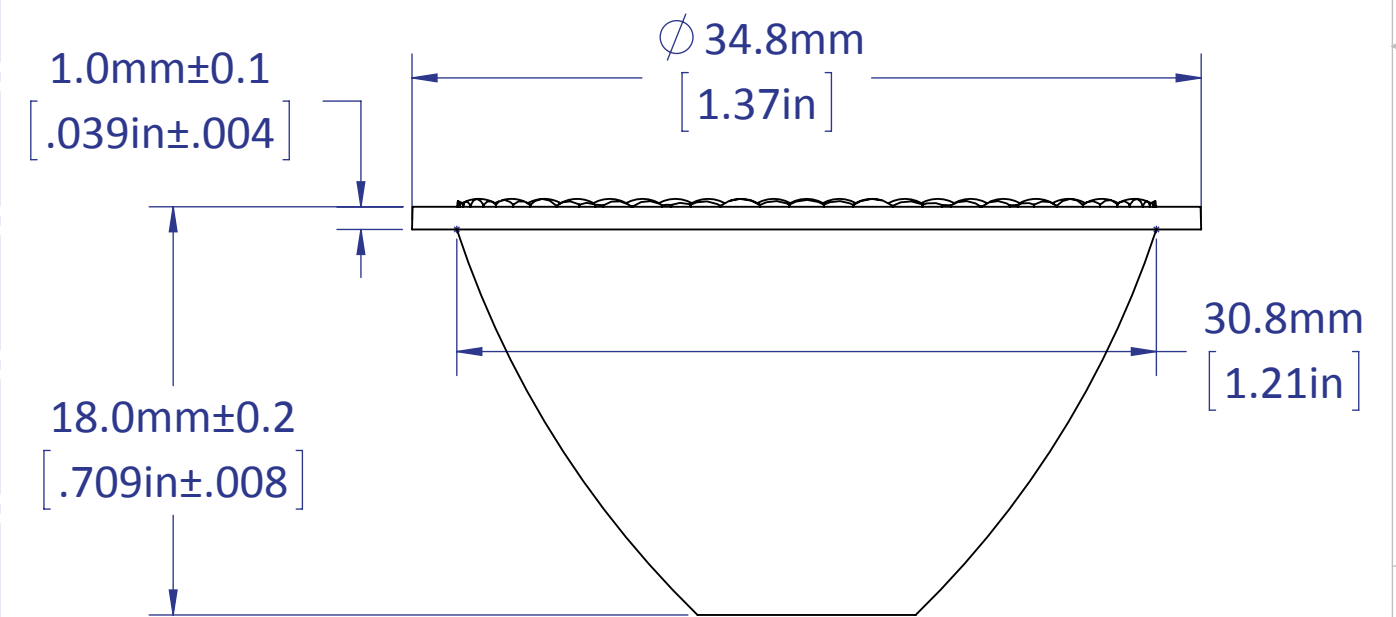
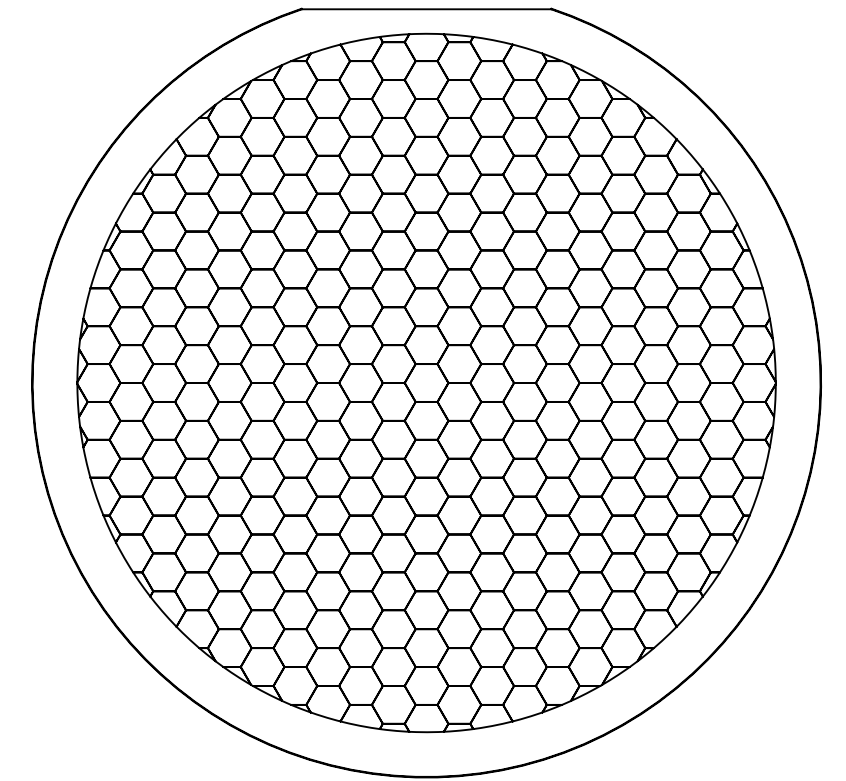
F
E
D
C
B
A



0.30mm^{+0.20}_{-0.30}
[.012in^{+0.008}_{-.012}]
(GAP BETWEEN BOTTOM
OF LENS AND TOP
OF EMITTER'S CERAMIC
SURFACE)



LENS ONLY



- NOTES:
1. TOLERANCE BLOCK DOES NOT APPLY.
 2. UNLESS OTHERWISE NOTED, GENERAL TOLERANCE IS $\pm 0.5\text{mm}$.
 3. KEY OPTICAL SURFACES MAY BE DISTORTED.

PROPRIETARY AND CONFIDENTIAL
THE INFORMATION CONTAINED IN THIS
DRAWING IS THE SOLE PROPERTY OF
LEDENGIN, INC. ANY
REPRODUCTION IN PART OR AS A WHOLE
WITHOUT THE WRITTEN PERMISSION OF
LEDENGIN, CORP. IS PROHIBITED.

UNLESS OTHERWISE SPECIFIED:		NAME		<div>LED Engin, Inc.</div> <div>LZ4-SERIES LENS AND LENS HOLDER</div> <div>(LENS/EMITTER-SOLID VIEWS)</div>		
DIMENSIONS ARE IN MILLIMETERS TOLERANCES:		DRAWN	DAA			
.X ± 0.10		CHECKED				
.XX ± 0.05		ENG APPR.				
.XXX ± 0.025		MFG APPR.				
Angle ± 0.5		Q.A.				
		COMMENTS:				
MATERIAL		N/A		SIZE	PART NUMBER	REV
FINISH		N/A		C	LLxx-2T06-P3	E
DO NOT SCALE DRAWING				SCALE: 3:1		SHEET 2 OF 2