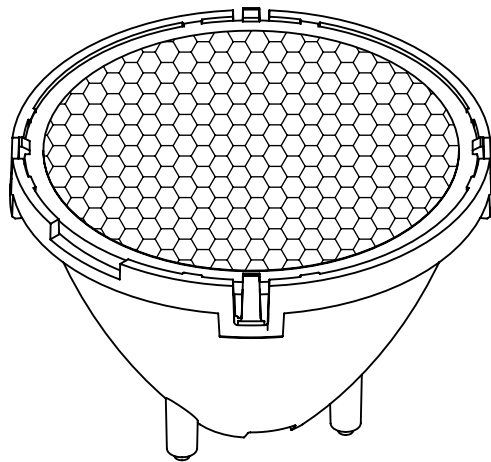
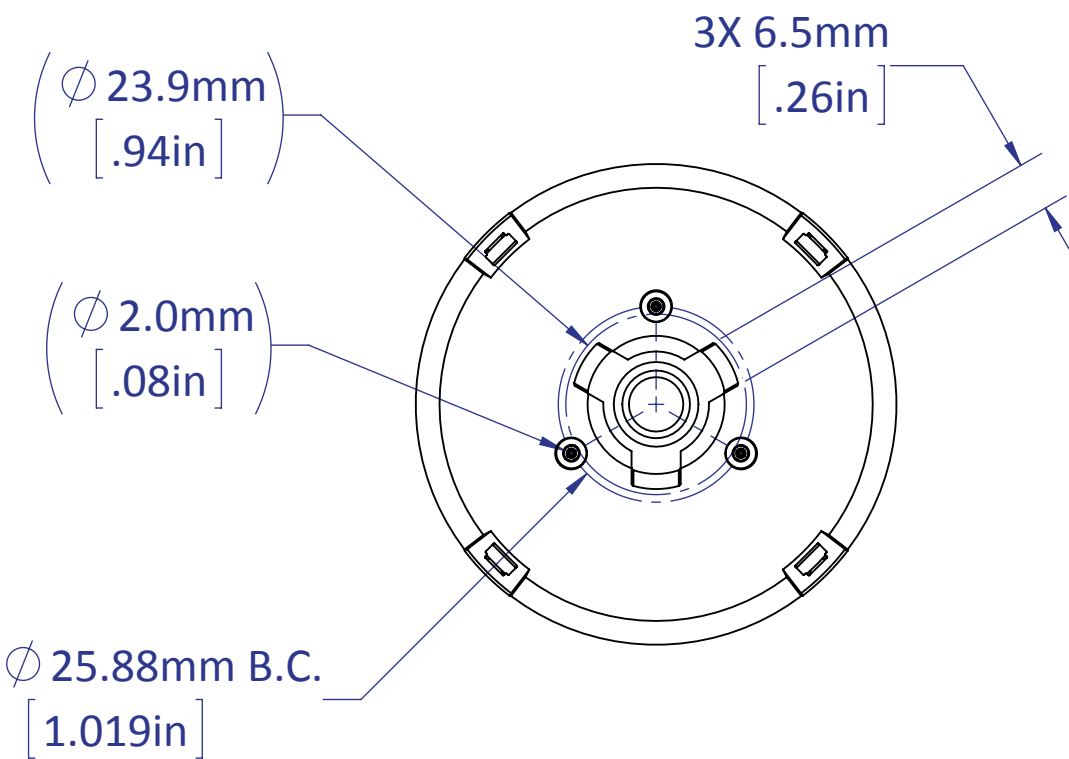
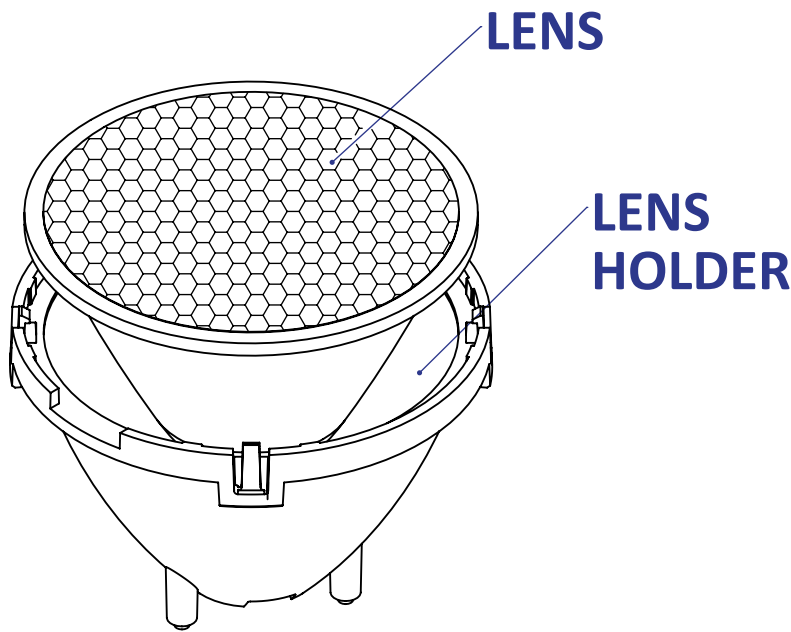
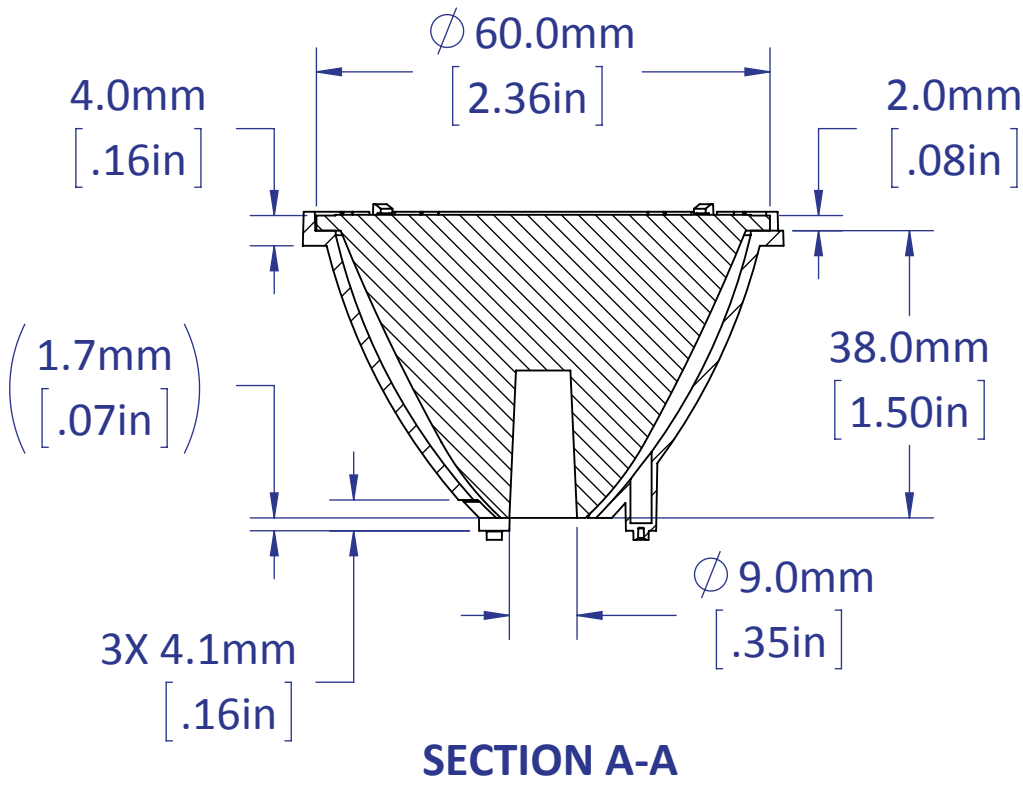
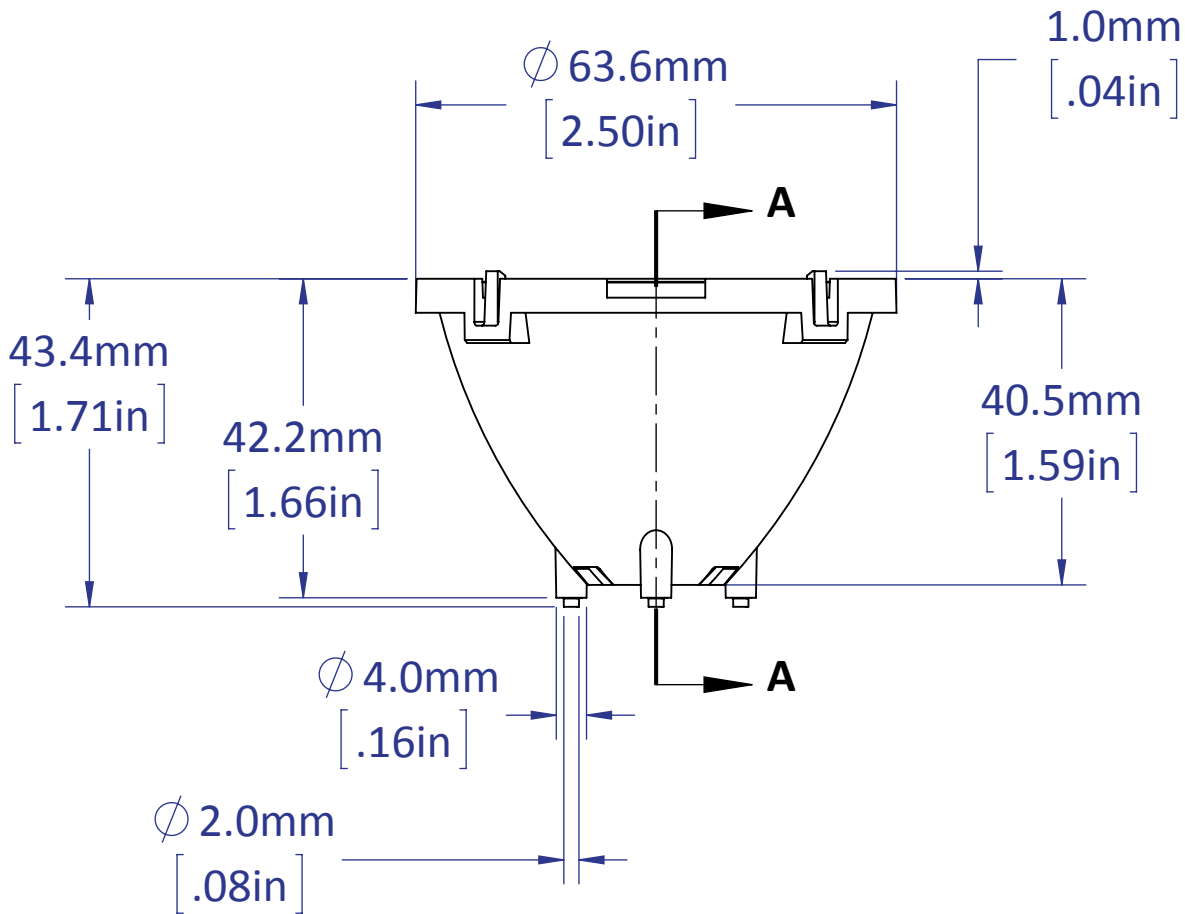
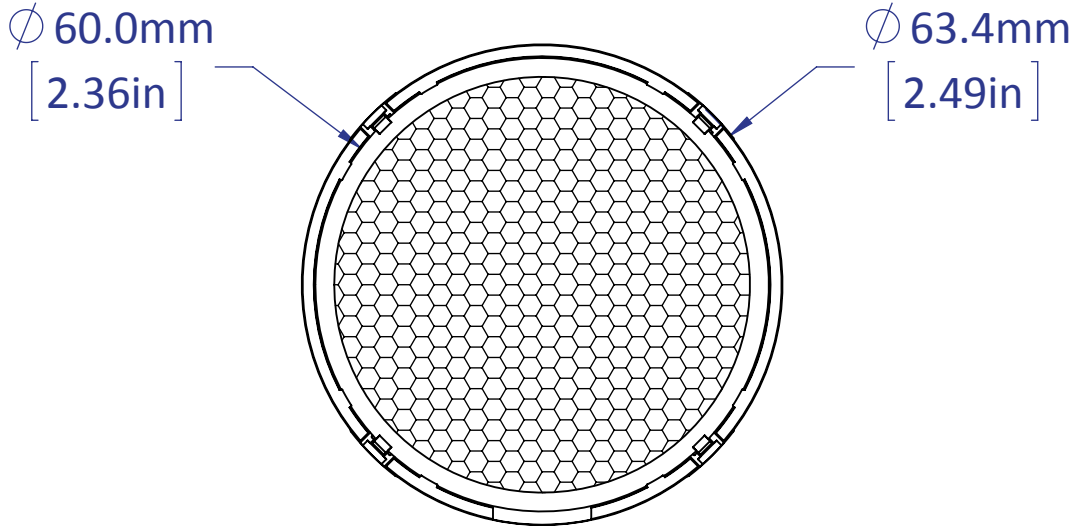


REVISIONS			
REV.	DESCRIPTION	DATE	APPROVED
A1	INITIAL RELEASE	9/7/2012	DAA



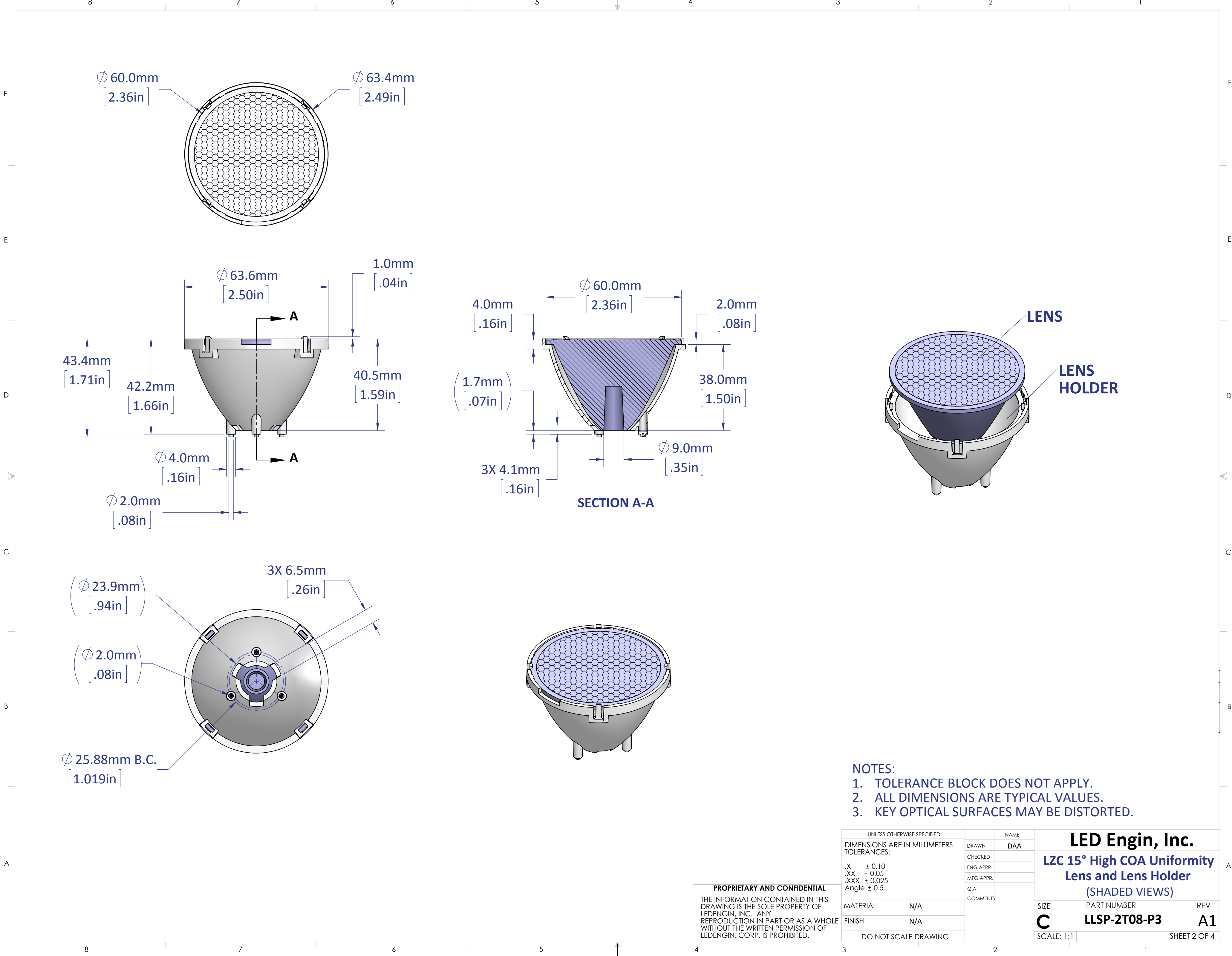
- NOTES:
1. TOLERANCE BLOCK DOES NOT APPLY.
  2. ALL DIMENSIONS ARE TYPICAL VALUES.
  3. KEY OPTICAL SURFACES MAY BE DISTORTED.

**PROPRIETARY AND CONFIDENTIAL**  
THE INFORMATION CONTAINED IN THIS DRAWING IS THE SOLE PROPERTY OF LEDENGIN, INC. ANY REPRODUCTION IN PART OR AS A WHOLE WITHOUT THE WRITTEN PERMISSION OF LEDENGIN, CORP. IS PROHIBITED.

UNLESS OTHERWISE SPECIFIED:		NAME		<div>LED Engin, Inc.</div> <div>LZC 15° High COA Uniformity</div> <div>Lens and Lens Holder</div> <div>(SOLID VIEWS)</div>		
DIMENSIONS ARE IN MILLIMETERS TOLERANCES:  .X ± 0.10 .XX ± 0.05 .XXX ± 0.025 Angle ± 0.5		DRAWN	DAA			
		CHECKED				
		ENG APPR.				
		MFG APPR.				
MATERIAL N/A		Q.A.		SIZE C	PART NUMBER LLSP-2T08-P3	REV A1
FINISH N/A		COMMENTS:				
DO NOT SCALE DRAWING						

SCALE: 1:1

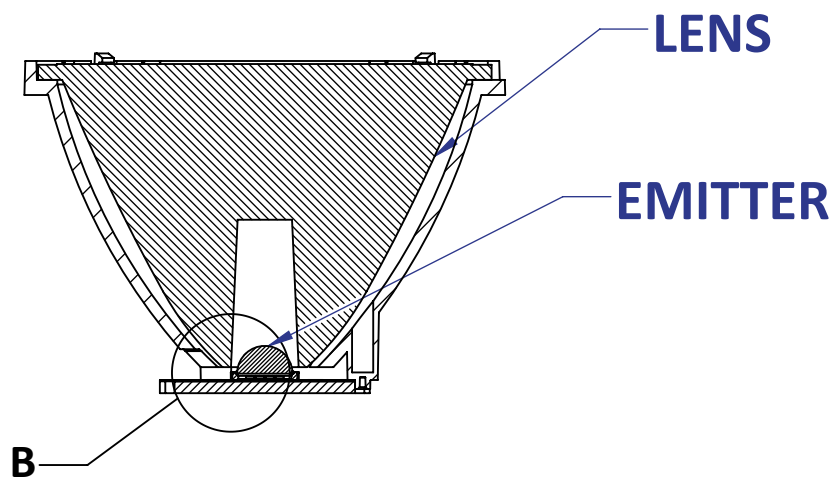
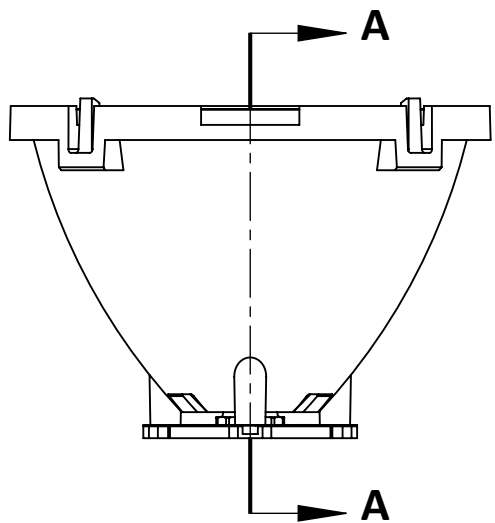
SHEET 1 OF 4



- NOTES:
1. TOLERANCE BLOCK DOES NOT APPLY.
  2. ALL DIMENSIONS ARE TYPICAL VALUES.
  3. KEY OPTICAL SURFACES MAY BE DISTORTED.

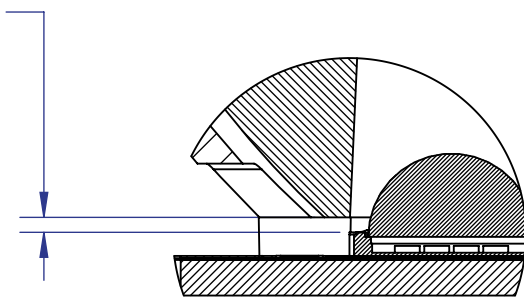
**PROPRIETARY AND CONFIDENTIAL**  
THE INFORMATION CONTAINED IN THIS DRAWING IS THE SOLE PROPERTY OF LEDENGIN, INC. ANY REPRODUCTION IN PART OR AS A WHOLE WITHOUT THE WRITTEN PERMISSION OF LEDENGIN, CORP. IS PROHIBITED.

UNLESS OTHERWISE SPECIFIED:		NAME		<div>LED Engin, Inc.</div> <div>LZC 15° High COA Uniformity</div> <div>Lens and Lens Holder</div> <div>(SHADED VIEWS)</div>		
DIMENSIONS ARE IN MILLIMETERS TOLERANCES:  .X     ± 0.10 .XX   ± 0.05 .XXX ± 0.025 Angle ± 0.5		DRAWN	DAA			
		CHECKED				
		ENG APPR.				
		MFG APPR.				
MATERIAL		N/A	COMMENTS:	SIZE	PART NUMBER	REV
FINISH		N/A		C	LLSP-2T08-P3	A1
DO NOT SCALE DRAWING					SCALE: 1:1	SHEET 2 OF 4



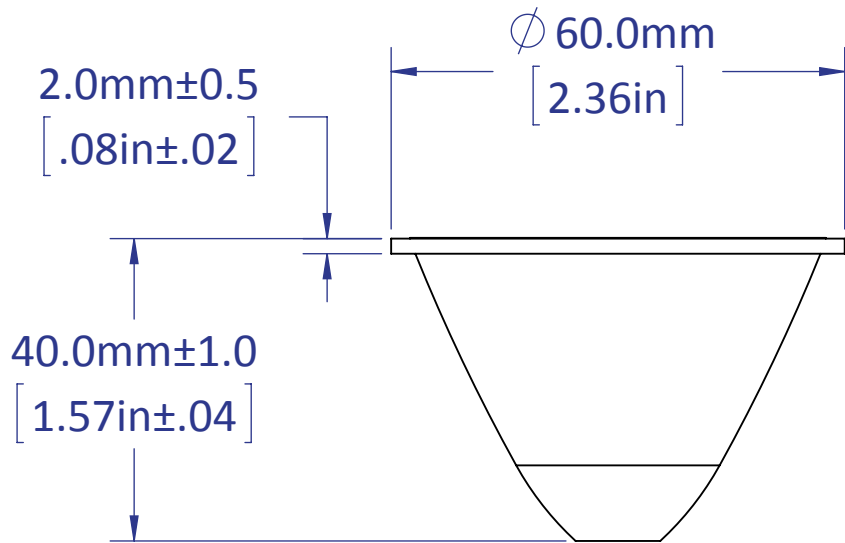
SECTION A-A

0.66mm±0.25  
[.026in±.010]  
(GAP BETWEEN BOTTOM  
OF LENS AND TOP  
OF EMITTER'S CERAMIC  
SURFACE)



DETAIL B  
SCALE 3 : 1

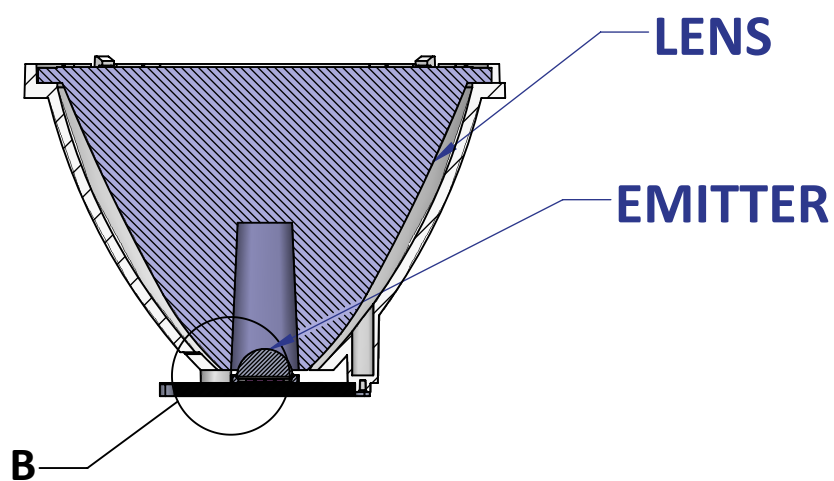
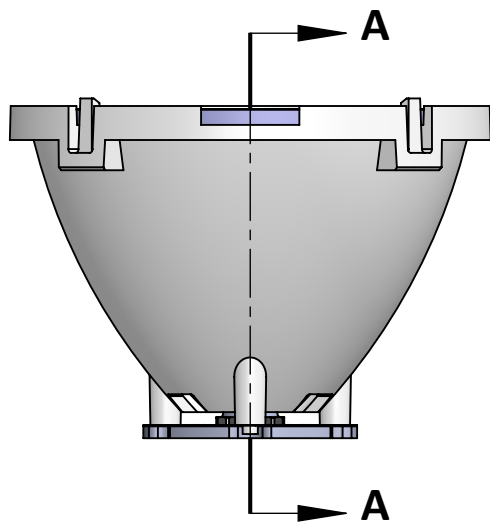
LENS ONLY



- NOTES:
1. TOLERANCE BLOCK DOES NOT APPLY.
  2. ALL DIMENSIONS ARE TYPICAL VALUES.
  3. KEY OPTICAL SURFACES MAY BE DISTORTED.

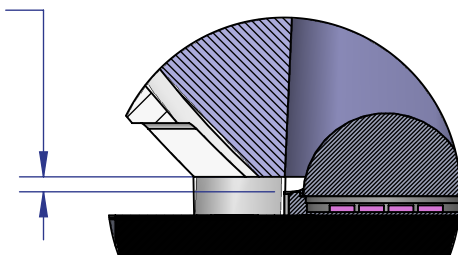
**PROPRIETARY AND CONFIDENTIAL**  
THE INFORMATION CONTAINED IN THIS  
DRAWING IS THE SOLE PROPERTY OF  
LEDENGIN, INC. ANY  
REPRODUCTION IN PART OR AS A WHOLE  
WITHOUT THE WRITTEN PERMISSION OF  
LEDENGIN, CORP. IS PROHIBITED.

UNLESS OTHERWISE SPECIFIED:		NAME		<div>LED Engin, Inc.</div> <div>LZC 15° High COA Uniformity</div> <div>Lens and Lens Holder</div> <div>(LENS/EMITTER: SOLID VIEWS)</div>		
DIMENSIONS ARE IN MILLIMETERS TOLERANCES:  .X     ± 0.10 .XX    ± 0.05 .XXX   ± 0.025 Angle ± 0.5		DRAWN	DAA			
		CHECKED				
		ENG APPR.				
		MFG APPR.				
MATERIAL            N/A		Q.A.		SIZE	PART NUMBER	REV
FINISH                N/A		COMMENTS:		C	LLSP-2T08-P3	A1
DO NOT SCALE DRAWING						
				SCALE: 1:1	SHEET 3 OF 4	



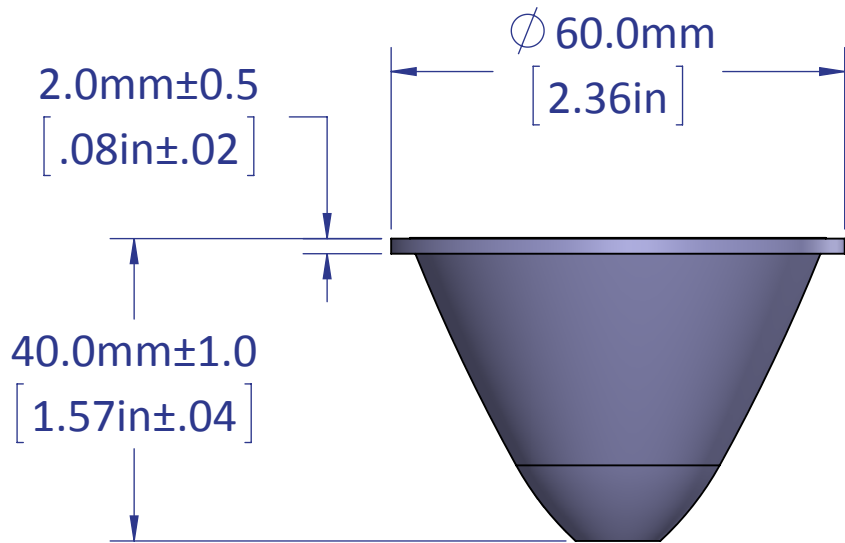
SECTION A-A

0.66mm±0.25  
[.026in±.010]  
(GAP BETWEEN BOTTOM  
OF LENS AND TOP  
OF EMITTER'S CERAMIC  
SURFACE)



DETAIL B  
SCALE 3 : 1

LENS ONLY



- NOTES:
1. TOLERANCE BLOCK DOES NOT APPLY.
  2. ALL DIMENSIONS ARE TYPICAL VALUES.
  3. KEY OPTICAL SURFACES MAY BE DISTORTED.

**PROPRIETARY AND CONFIDENTIAL**  
THE INFORMATION CONTAINED IN THIS  
DRAWING IS THE SOLE PROPERTY OF  
LEDENGIN, INC. ANY  
REPRODUCTION IN PART OR AS A WHOLE  
WITHOUT THE WRITTEN PERMISSION OF  
LEDENGIN, CORP. IS PROHIBITED.

UNLESS OTHERWISE SPECIFIED:		NAME		<b>LED Engin, Inc.</b> <b>LZC 15° High COA Uniformity</b> <b>Lens and Lens Holder</b> (LENS/EMITTER: SHADED VIEWS)	
DIMENSIONS ARE IN MILLIMETERS TOLERANCES: .X ± 0.10 .XX ± 0.05 .XXX ± 0.025 Angle ± 0.5		DRAWN	DAA		
		CHECKED			
		ENG APPR.			
		MFG APPR.			
MATERIAL		N/A	COMMENTS:		SIZE <b>C</b>
FINISH		N/A			
DO NOT SCALE DRAWING					
					SCALE: 1:1
					PART NUMBER <b>LLSP-2T08-P3</b>
					REV <b>A1</b>
					SHEET 4 OF 4